

B15 FIRE BACK BOX

2024 It is produced by KME Co., Ltd

CATALOGUE

B15 FIRE BACK BOX

The new **fire protection** cavity wall boxes for installation in ship walls.

Certified and designed for fast installation.



Company introduction

· History

- 2024 12 **Kaune** sole agency in South Korea.
- 07 **Astro** sole agency in Marine Segment.
- 07 **B-15 fire back box** achieves BV Certification for fire protection.
- 2023 12 Registered vendor to **KANGNAM** Shipbuilding.
- 09 Registered vendor to **MODEC**.
- 08 Registered vendor to **SEATRIUM**.
- 03 Establishment of **Unit Toilet Factory**.
- 2022 05 Registered vendor to **HSG Sungdong** Shipbuilding.
- 04 Acquired ISO 45001:2018 certification.
Registered vendor to **DAE SUN** Shipbuilding & Engineering Co., Ltd.
- 02 Registered vendor to **Hyundai** Heavy Industries.
- 2021 09 Registered vendor to **Zvezda** Shipbuilding in Russia.
- 06 Development of **GRP Ex Junction Box** certification completed.
- 2020 06 Registered vendor to **Hanjin** Heavy Industries.
- 2019 10 Registered vendor to **Hyundai Mipo** Dockyard (HMD) Co., Ltd.
- 2014 06 Registered vendor to **DAEWOO** Shipbuilding & Marine Engineering Co., Ltd.
-Low Location Light for H.3401
- 2013 10 Registered vendor to **SAMSUNG** Heavy Industries Co., Ltd.
- 2009 02 **Established KME Co., Ltd.**



※ For more information visit h-kme.com

· Location



Busan (Head Office)

29, Nakdong-daero1302 beon-gil,
Sasang-gu, Busan, South Korea



Gimhae (Office/factory)

25, Seobu-ro 1331beon-gil, Juchon-myeon,
Gimhae-si, Gyeongsangnam-do, South Korea



The Optimal Solution for Fire Safety on Ships

KME Co., Ltd. provides high-performance B-15 FIRE BACK BOX to prepare for potential fire emergencies during ship operations. This product complies with international maritime safety standards and effectively prevents fires while ensuring safety in various areas on board.



HWD B15 cavity wall box.

· Characteristics

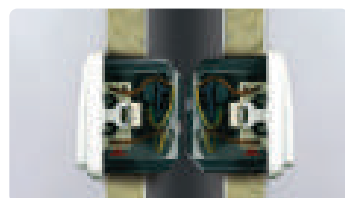
For category B15 separators No time-consuming encasing.

Retrofitting installation in ship walls also possible

· The new cavity wall boxes for mounting in ship walls without encasing.

The new cavity wall boxes for category B15 interfaces react to a fire extremely quickly. The integrated fire retardant agent “bubbles” and reliably closes the installation opening.

HWD B15 cavity wall boxes act as a screen on the fire and smoke side of the area to be protected while retaining the **B15 function of the fire protection wall.**



· Installation in metal-covered walls



Cutter no. 1084-10 for mineral materials and cutter no. 1083-74 for metal-covered walls ensure fast and easy fitting by making the required $\varnothing 74$ mm installation opening.



A maximum of two or four entries up to $\varnothing 11.5$ mm can be assigned as well as for flame resistance cables in accordance with UL-V0.

· Product Specifications



KB-15S
B15 FIRE BOX SINGLE

- Installation Width **74mm**
- Installation Height 74mm
- Installation Depth 44mm



KB-15A
B15 FIRE BOX 3MODULE

- Installation Width **115mm**
- Installation Height 74mm
- Installation Depth 44mm



KB-15D
B15 FIRE BOX DOUBLE

- Installation Width **144mm**
- Installation Height 74mm
- Installation Depth 44mm

· Detail

It is made of special materials to prevent fire.



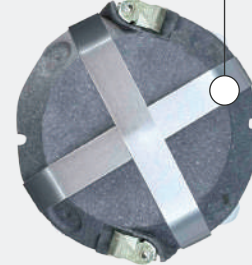
FRONT

Hold the wall when fixing screws.

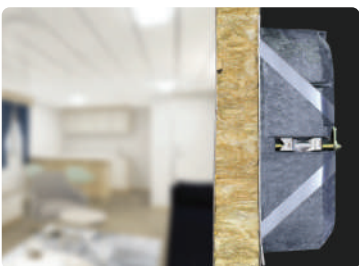


SIDE

It holds the model of the product in case of fire.



BACK



Future-Oriented Vision

KME Co., Ltd. is committed to continuous research and development to improve safety and efficiency in the maritime industry.



Continuous Innovation

We will lead the advancement of the maritime industry by continuously developing new technologies and solutions.



Global Partnerships

Strengthening our global network to create value in various markets by collaborating with customers worldwide.

We prioritize customer safety and ensure a stable onboard environment by providing high-quality products that comply with strict fire protection standards.





· **ADDRESS** : 29, Nakdong-daero1302 beon-gil, Sasang-gu, Busan, South Korea
· **TEL** : +82-51-327-2670 · **FAX** : +82-51-327-2673 · **E-mail** : sales@h-kme.com