

B-15 CLASS BACK BOX

A product that prevents the spread of
flames and smoke during a fire.

Certified and designed for fast installation.





KME Company Overview

KME is a company specialized in providing ship safety solutions for the maritime industry, offering a range of safety and convenience equipment, including the high-performance B-15 class back box, through custom product design and manufacturing.

KME prioritizes safety and efficiency in maritime environments, and is recognized in the global market through product development and technical support tailored to customer needs. Our goal is to provide the highest quality and safety, contributing to the advancement of the maritime industry.



Company introduction

· History

- 2025 09 HULE Electrical sole agency in South Korea.
- 03 CHANGZHOU Marine Cable sole agency in South Korea.
- 2024 12 Kaune sole agency in South Korea.
- 07 Astro sole agency in Marine Segment.
- B-15 class back box achieves BV Certification for fire protection.
- 2023 12 Registered vendor to KANGNAM Shipbuilding.
- 09 Registered vendor to MODEC.
- 08 Registered vendor to SEATRIUM.
- 03 Establishment of Unit Toilet Factory.
- 2022 05 Registered vendor to HSG Sungdong Shipbuilding.
- 04 Acquired ISO 45001:2018 certification.
- Registered vendor to DAE SUN Shipbuilding & Engineering Co., Ltd.
- 02 Registered vendor to Hyundai Heavy Industries.
- 2021 09 Registered vendor to Zvezda Shipbuilding in Russia.
- 06 Development of GRP Ex Junction Box certification completed.
- 2020 Registered vendor to Hanjin Heavy Industries.
- 2019 10 Registered vendor to Hyundai Mipo Dockyard (HMD) Co., Ltd.
- 2014 06 Registered vendor to DAEWOO Shipbuilding & Marine Engineering Co., Ltd. -Low Location Light for H.3401
- 2013 10 Registered vendor to SAMSUNG Heavy Industries Co., Ltd.
- 2009 02 Established KME Co., Ltd.



· Location



Busan (Head Office)

29, Nakdong-daero1302 beon-gil,
Sasang-gu, Busan, South Korea



Gimhae (Office/factory)

25, Seobu-ro 1331beon-gil, Juchon-myeon,
Gimhae-si, Gyeongsangnam-do, South Korea

Product Overview

- The B-15 class back box plays an important role in protecting ships from fire and smoke. In the event of a fire, it rapidly expands to quickly seal installation openings and effectively prevent the spread of fire within the vessel, delivering optimal fire protection performance.
- This product holds a B-15 fire protection rating and is designed to meet the high safety standards required in the maritime environment.



Fire Protection Performance

- It reacts to flames by expanding rapidly, sealing openings quickly to prevent the spread of fire and smoke, thereby minimizing damage.
- It prevents damage by blocking the transfer of heat with insulating material.



Functions of B-15 Class Back Box

Complies with B-15 Fire Rating

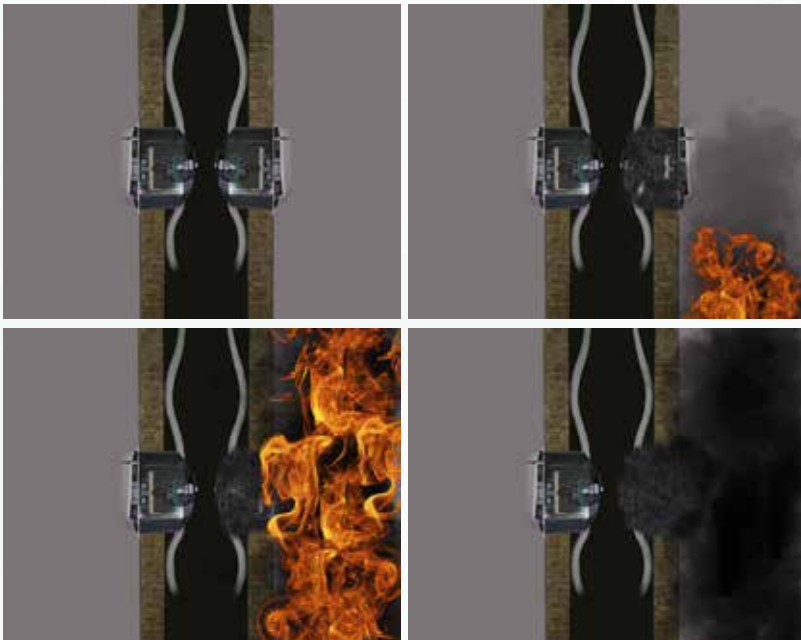
Maintains flame and heat insulation performance for a specified period in accordance with IMO B-15 standards.

Fire-Responsive Sealing

Equipped with intumescent material that expands under heat to seal the installation opening, preventing the spread of fire and toxic gases to adjacent areas.

No Enclosure Required

Can be installed directly without an additional enclosure, enabling simple and efficient installation.



• Detail

It prevents electrical leakage and electric shock by using insulating materials.



It is easy to install on ship wall panels.



It helps the product maintain its shape for a long time during a fire.



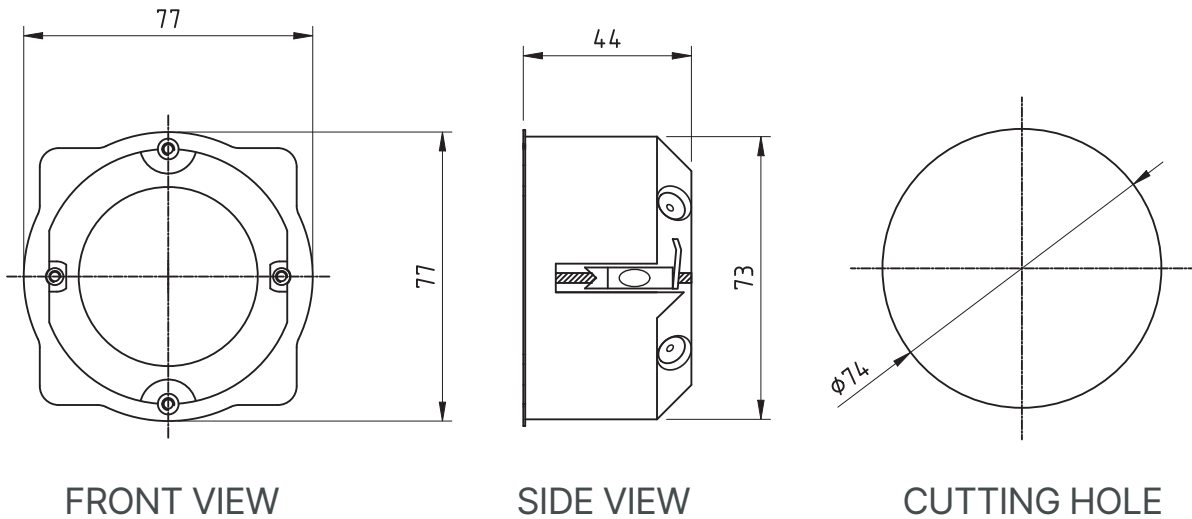
Product Data Sheet



B-15 Fire Class Back Box
SINGLE

· Model No	KB-15S
· For Panel thickness	0,2 - 40 mm
· Depth	44 mm
· Width	77 mm
· Cut Hole Ø	74 mm
· Fixing screw spacing	60 mm
· Conduit entries up to Ø 13mm	4
· Certification	BV, MED

DESIGN DRAWING



INSTALLATION



1. Cutting Opening for Installation

Cut one installation opening using cutter EXPERT Ø 74 mm.



2. Conduit / Cable Penetration Cutting

Use a step drill or reamer to cut an exact conduit or cable opening for smoke-tight installation.



3. Product Installation and Fixing

Insert the back box into the prepared wall opening and tighten the screws with a screwdriver so that the clamps secure the wall.

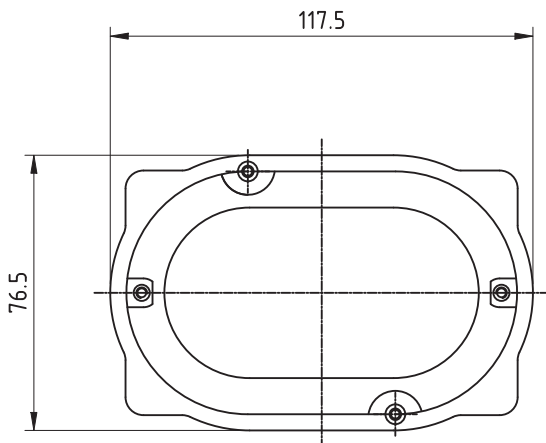
· Product Data Sheet



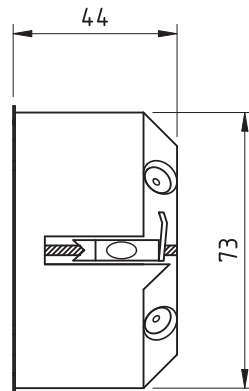
B-15 Fire Class Back Box
3 MODULE

· Model No	KB-15A
· For Panel thickness	0,2 - 40 mm
· Depth	44 mm
· Width	117.5 mm
· Cut Hole Ø	74 mm
· Fixing screw spacing	60 mm
· Conduit entries up to Ø 13mm	4
· Certification	BV, MED

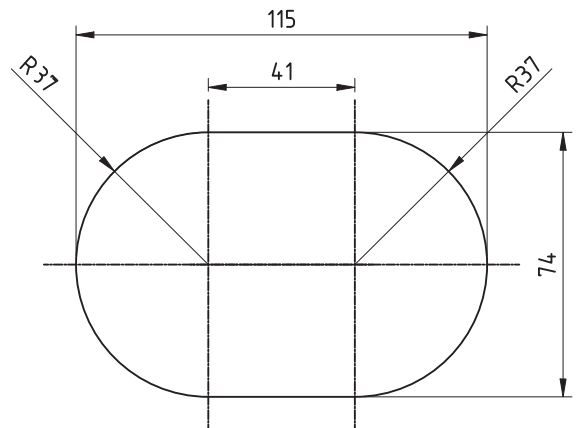
· DESIGN DRAWING



FRONT VIEW



SIDE VIEW



CUTTING HOLE

· INSTALLATION



1. Double Opening Cutting

Cut two installation openings using cutter EXPERT Ø 74 mm with a centre distance of 41 mm.



2. Connection Part Fabrication

After cutting the 74 mm holes with the hole saw, cut out the 41 mm protruding section in a straight line using a jigsaw.



3. Conduit / Cable Penetration Cutting

Use a step drill or reamer to cut an exact conduit or cable opening for smoke-tight installation.



4. Product Installation and Fixing

Insert the back box into the prepared wall opening and tighten the screws with a screwdriver so that the clamps secure the wall.

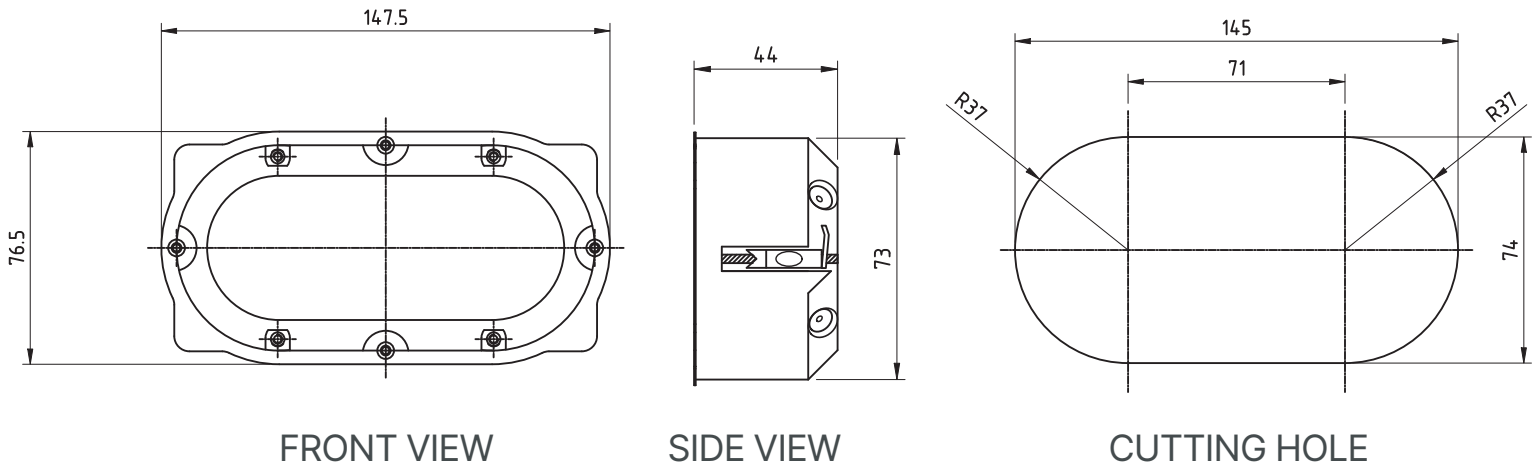
· Product Data Sheet



B-15 Fire Class Back Box
DOUBLE

· Model No	KB-15D
· For Panel thickness	0,2 - 40 mm
· Depth	44 mm
· Width	147.5 mm
· Cut Hole Ø	74 mm
· Fixing screw spacing	60 mm
· Conduit entries up to Ø 13mm	4
· Certification	BV, MED

· DESIGN DRAWING



FRONT VIEW

SIDE VIEW

CUTTING HOLE

· INSTALLATION



1. Double Opening Cutting

Cut two installation openings using cutter EXPERT Ø 74 mm with a centre distance of 41 mm.



2. Connection Part Fabrication

After cutting the 74 mm holes with the hole saw, cut out the 41 mm protruding section in a straight line using a jigsaw.



3. Conduit / Cable Penetration Cutting

Use a step drill or reamer to cut an exact conduit or cable opening for smoke-tight installation.



4. Product Installation and Fixing

Insert the back box into the prepared wall opening and tighten the screws with a screwdriver so that the clamps secure the wall.

Future-Oriented Vision

KME Co., Ltd. is committed to continuous research and development to improve safety and efficiency in the maritime industry.



Continuous Innovation

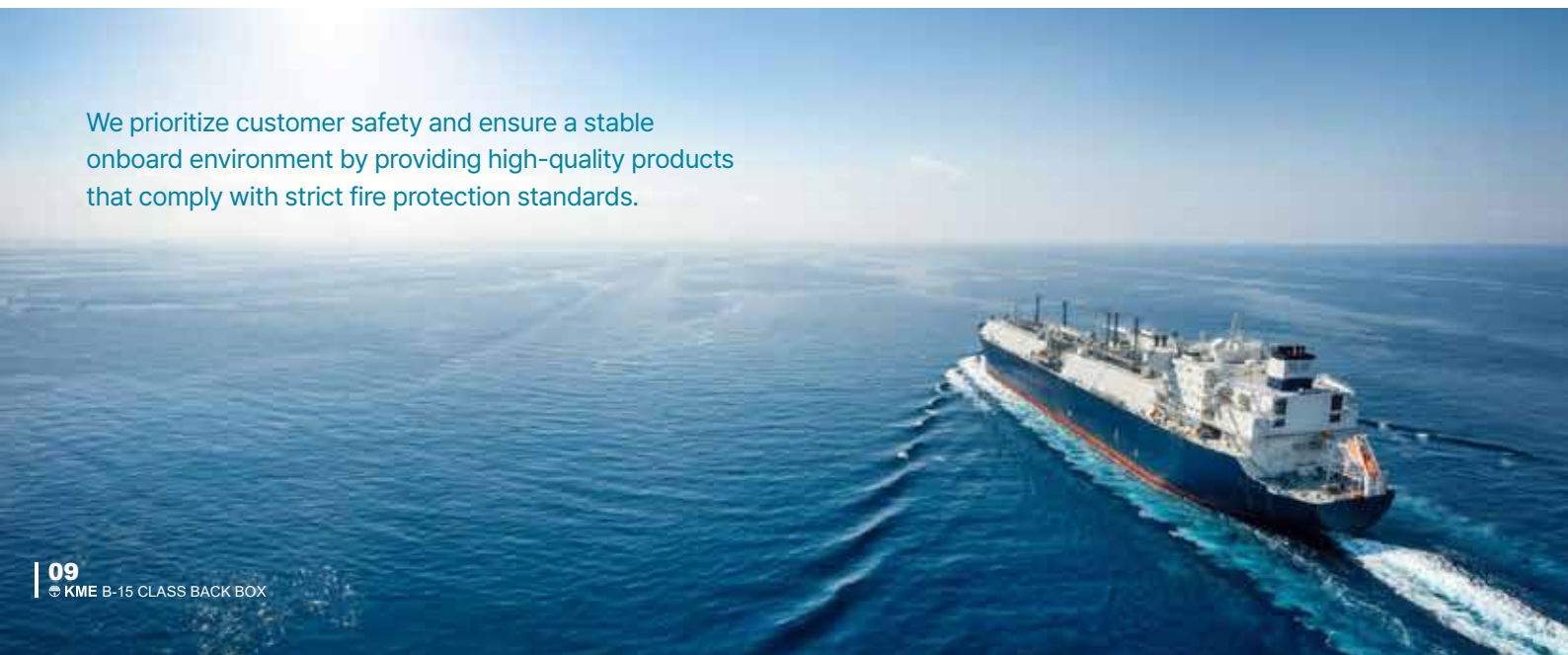
We will lead the advancement of the maritime industry by continuously developing new technologies and solutions.



Global Partnerships

Strengthening our global network to create value in various markets by collaborating with customers worldwide.

We prioritize customer safety and ensure a stable onboard environment by providing high-quality products that comply with strict fire protection standards.





· ADDRESS : 29, Nakdong-daero1302 beon-gil, Sasang-gu, Busan, South Korea
· TEL : +82-51-327-2670 · FAX : +82-51-327-2673 · E-mail : sales@h-kme.com