

NAVIGATION LIGHT

2024 It is produced by KME Co., Ltd

# CATALOG

NAVIGATION LIGHT –

Essential equipment for  
**safety during ship navigation**



# Company introduction

## · History

- 2024 12 **Kaune** sole agency in South Korea.
- 07 **Astro** sole agency in Marine Segment.
- 07 **B-15 fire back box** achieves BV Certification for fire protection.
- 2023 12 Registered vendor to **KANGNAM** Shipbuilding.
- 09 Registered vendor to **MODEC**.
- 08 Registered vendor to **SEATRIUM**.
- 03 Establishment of **Unit Toilet Factory**.
- 2022 05 Registered vendor to **HSG Sungdong** Shipbuilding.
- 04 Acquired ISO 45001:2018 certification.
- Registered vendor to **DAE SUN** Shipbuilding & Engineering Co., Ltd.
- 02 Registered vendor to **Hyundai** Heavy Industries.
- 2021 09 Registered vendor to **Zvezda** Shipbuilding in Russia.
- 06 Development of **GRP Ex Junction Box** certification completed.
- 2020 06 Registered vendor to **Hanjin** Heavy Industries.
- 2019 10 Registered vendor to **Hyundai Mipo** Dockyard (HMD) Co., Ltd.
- 2014 06 Registered vendor to **DAEWOO** Shipbuilding & Marine Engineering Co., Ltd.
- Low Location Light for H.3401
- 2013 10 Registered vendor to **SAMSUNG** Heavy Industries Co., Ltd.
- 2009 02 **Established KME Co., Ltd.**



※ For more information visit [h-kme.com](http://h-kme.com)

## · Location



### Busan (Head Office)

29, Nakdong-daero1302 beon-gil,  
Sasang-gu, Busan, South Korea



### Gimhae (Office/factory)

25, Seobu-ro 1331beon-gil, Juchon-myeon,  
Gimhae-si, Gyeongsangnam-do, South Korea



# Leading Ship Safety, KME Co., Ltd.

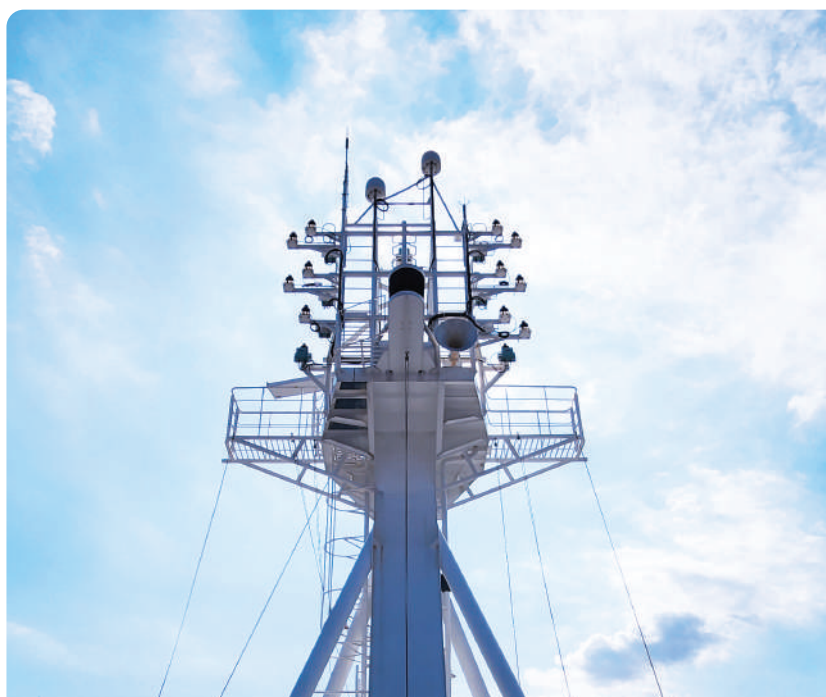


KME Co., Ltd. is a leading marine equipment manufacturer that prioritizes safety at sea. We enhance the safety and efficiency of the global shipping industry by providing reliable products using the latest technology and high-quality components.

## Product Introduction

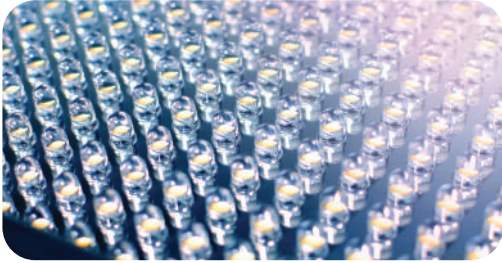
### · **DHR80N POLAR** Navigation Light

The DHR80N POLAR is a high-performance navigation light suitable for various vessels such as container ships, LNGCs, tankers, and bulk carriers. It clearly marks the position of the ship in both clear and dark conditions, helping to prevent accidents.



# Product Features

## · Key Contents



### **High-Brightness LED**

Utilizes automotive-grade LEDs to maintain high brightness with low power consumption and offers a long lifespan.



### **Durability**

Made from high-quality components, it is one of the most durable and robust products in its class.



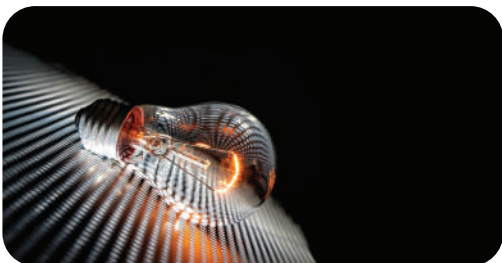
### **Visible from a Distance**

Installed at a high point on the ship, ensuring visibility from afar.



### **Supports Various Colors**

Available in green, blue, white, and red to comply with maritime regulations.



### **Energy Efficient**

Operates stably for long periods with low power consumption.

# Product Specifications

## · NAVIGATION LIGHT



**DHR80N POLAR**  
(-55°C to 55°C)

- Black, hard-anodized seawater-resistant aluminum
- POM insulation sleeves to prevent galvanic corrosion
- UV-resistant borosilicate glass lens
- Epoxy-potted power supply for maximum protection
- Sea-going vessels over 50m in length



**SPARE PART KIT**

## Color Options

- The DHR80N POLAR supports various colors to ensure safe navigation according to maritime regulations



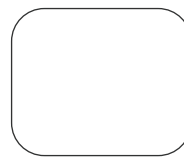
**GREEN**

Indicates the starboard side of the vessel.



**RED**

Indicates the port side of the vessel.



**WHITE**

Used for the stern and auxiliary lighting.



**BLUE**

Used for special purposes and identification in port.

Each color uses high-brightness LEDs to ensure clarity, effectively communicating the vessel's position and direction in various maritime conditions.



# Installation Guide

- The DHR80N POLAR navigation light is designed to be installed at a high position on the ship to ensure optimal visibility.



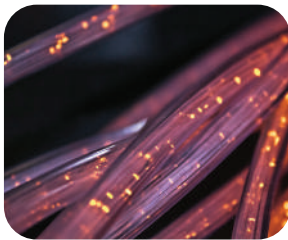
## Position Selection

Install at the highest point of the vessel for visibility from all directions.



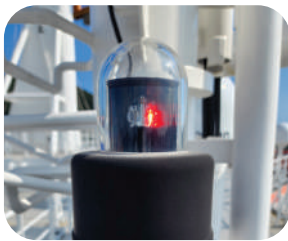
## Mounting Preparation

Use screws to secure the light firmly.



## Power Connection

Connect to the vessel's power system.



## Testing

After installation, ensure all color lights operate correctly.



## Safety Check

Perform a final inspection to confirm all connections are secure.



# Product Certification

- It has received the international protection rating, **IP66**, for its protection against dust and water.



Ingress Protection

The highest dust protection rating of 6, providing complete protection against fine dust.

A waterproof rating that ensures the equipment remains undamaged even under strong water jets or sprays.





# Future-Oriented Vision

KME Co., Ltd. is committed to continuous research and development to improve safety and efficiency in the maritime industry.



## Continuous Innovation

We will lead the advancement of the maritime industry by continuously developing new technologies and solutions.



## Global Partnerships

Strengthening our global network to create value in various markets by collaborating with customers worldwide.

KME supports your safe voyage through the highest quality and service. Experience safe and efficient navigation with the DHR80N POLAR navigation light.







---

· **ADDRESS** : 29, Nakdong-daero 1302, beon-gil, Sasang-gu, Busan, 46910  
· **TEL** : +82-51-327-2670    · **FAX** : +82-51-327-2673    · **E-mail** : sales@h-kme.com