



# THE BEST GLOBAL LEADER

---

For the past 25 years, KME has been manufacturing, supplying, and installing equipment suitable for merchant ships and offshore projects, as well as commissioning to Korean shipyards. We consider product technology and quality as our top priority, and we are actively cooperating with customers' requirements. Despite our current customer satisfaction levels, we will continue developing new business field and finding new markets. The best quality, best service, new product development under a management philosophy make our customer higher satisfied.



# CONTENTS

- 01** CEO GREETING
- 02** COMPANY OVERVIEW
- 03** ORGANIZATION STRUCTURE
- 04** KORMARINE EXHIBITION
- 05** SUPPLY PRODUCTS
- 06** SUPPLY ITEMS
- 07** GLOBAL SERVICE NETWORK
- 08** CERTIFICATION



# Ceo Greeting

---

“KME, with the unwavering passion of **Initial Intention** and racing towards its goals.”

初心

We have grown through constant challenges and innovation like a racehorse that never loses sight of its target.

We at KME have always strived to create the highest value.

Together with our cherished customers, who we have formed valuable relationships with, KME will continue to build a more advanced future.

We earnestly seek your continued interest and support as we embark on this journey of growth with us.

---

CEO & President  
Jae-Youn Seong



# Company Overview

It's a company introduction.



KME Co.,Ltd



JAE-YOUN SEONG



1999. 03. 16



29, NAKDONG-DAERO 1302 BEON-GIL, SASANG-GU, BUSAN, KOREA, 46910



[www.h-kme.com](http://www.h-kme.com)



· **BUSSINESS FIELD**

MARINE & ONSHORE & NEARSHORE & OFFSHORE, SPECIAL DIVISION

· **SUPPLY SCOPE**

ACCOMMODATION & ELECTRIC PARTS ITEMS SUPPLY, ENGINEERING, COMMISSIONING, INSTALLATION



TEL : +82-51-327-2670~2 / TID : +82-51-327-8761 / FAX: 82-51-327-2673 / E-MAIL : [sales@h-kme.com](mailto:sales@h-kme.com)



# Company Values

Company management principles

## CORE VALUES

KME Co., Ltd.,  
Loved by customer with new  
Challenges and technologies



We uphold honesty and  
Strong moral principles in all our actions.



We maintain consistency and reliability,  
ensuring trust in every endeavor.



We embrace creativity and forward-thinking  
To drive continuous improvement.

# Unit Toilet Factory

Unit Toilet Factory



# Company History 1

Introducing the history of challenges and growth.

2024. 07	<b>Astro sole agency in Marine Segment</b>
2023. 12	<b>Registered vendor to KANGNAM Shipbuilding</b>
2023. 09	<b>Registered vendor to MODEC</b>
2023. 08	<b>Registered vendor to SEATRIUM</b>
2022. 05	<b>Registered vendor to HSG Sungdong Shipbuilding</b>
2022. 04	<b>Acquired ISO 45001:2018 certification</b>
2022. 04	<b>Registered vendor to DAE SUN Shipbuilding &amp; Engineering Co., Ltd.</b>
2022. 02	<b>Registered vendor to Hyundai Heavy Industries</b>
2021. 10	Distributor Agreement with Orga BV
2021. 09	<b>Registered vendor to Zvezda Shipbuilding in Russia</b>
2021. 03	Awarded the 55th Taxpayer Day National Tax Service President Award
2021. 02	Acquired patent application for LED navigation lights with heating film
2020. 06	<b>Registered vendor to Hanjin Heavy Industries</b>
2020. 01	Acquired patent application for grounding material C-clamp for ships
2020. 01	Registered Ship name Board to SAMSUNG HEAVY INDUSTRIES CO., LTD.
2019. 10	<b>Registered vendor to Hyundai Mipo Dockyard (HMD) Co., Ltd.</b>
2019. 05	Registered as a design partner of Oriental Marine Tech
2019. 01	Registered as a design partner of DSME

# Company History 2

Introducing the history of challenges and growth.

2017. 08	Contracted an Agent with INTERTEC in Germany (Protected operating conditions)
2017. 03	Contracted an Agent with STAHL in Germany (Explosion protection)
2016. 10	Open Engineering office in Geoje Okpo
2016. 09	Registered Ice Class (-55°C USE) Navigation & Signal Light at Korean Intellectual Property Office
2016. 09	Registered design of B-15 Fire Class Switch & Socket Back Box at Korean Intellectual Property Office
2016. 02	Registered design of LED type Ship name Board Light by law firm CHANG JO
2015. 11	Appointed company for Korea military service
2015. 09	Acquired CE Certification for Junction box(Electric Heat Tracing System)
2015. 07	Acquired DNV Type approval certificate for KAISER B15 class fire protection box
2015. 01	Contracted an Agent with DHR in Netherlands (Arctic version lighting fixtures)
2014. 11	Registered design for pipe clamp at Korean Intellectual Property Office
2014. 08	Joined the Korea Venture Business Association
2014. 06	<b>Registered vendor to DAEWOO SHIPBUILDING &amp; MARINE ENGINEERING, CO., LTD. -Low Location Light for H.3401</b>
2014. 04	Contracted an Agent with THERMON in USA (Heat Tracing System Manufacturer)
2013. 10	<b>Registered vendor to SAMSUNG HEAVY INDUSTRIES CO., LTD.</b>
2013. 10	Contracted an Agent with MARAHRENS in Germany (Low Location Light Manufacturer)
2013. 10	Acquired company R&D Center Certification by KOITA
2013. 07	Changed the company's location to the current site in Samrak-dong, Busan



# Company History 3

Introducing the history of challenges and growth.

2013. 02	Received Certificate of Venture Business
2012. 11	Contracted an Agent with KAISER in Germany (B-15 FIRE CLASS Box Insulation)
2012. 11	Acquired Multi Receptacle Box IP56 Testing Certificate (KOLAS)
2012. 10	Registered design of distribution box for passenger ship's cabin at Korean Intellectual Property Office
2012. 05	Registered utility model of distribution box for shipping's cabin at Korean Intellectual Property Office
2011. 12	Registered utility model of socket protecting cover of distribution box at Korean Intellectual Property Office
2011. 10	Developed and supplied Management Control System for passenger ship's cabin
2010. 10	Developed and supplied Dist. Panel Board for passenger ship's cabin [DSME H7509/10]
2010. 05	Developed and supplied Dist. Panel Board for passenger ship's cabin [SAMSUNG SHI HN1807/08]
2009. 10	Acquired UL & CE certification for Lighting Fixtures (FL. MIRROR LIGHT etc.)
2009. 03	Acquired ISO9001:14001 certification
2009. 02	<b>Established KME Co., Ltd.</b>
2008. 12	Designated overseas certification business company by the SMBA [UL, CE]
2008. 01	Supplied shipping bathroom and toilet hardware and cabinet
2006. 06	Developed and supplied shipping bathroom and cabinet for unit toilet
2006. 05	Developed and supplied explosion-proof Junction box for special ship [FPSO, DRILL SHIP]
2004. 01	Contracted an Agent with ABTECH.
2003. 08	Received Fire Alarm System DNV type approval

# Company History 4

Introducing the history of challenges and growth.

2002.01	Manufactured and supplied explosion-proof Junction Box
2001.01	Developed and supplied Box for passenger ship [SAMSUNG MINOANG LINE]
2000.05	Developed and supplied Box for passenger ship [DSME MOBY-LINE]
2000.02	Contracted a Distributor with LEGRAND in France
2000.01	Manufactured and supplied shipping Junction Box
<b>1999.03</b>	<b>Established Korea Electrics</b>

# Customer

KME works with world-class companies.

## · REGISTERED SHIPYARD (KOREA)

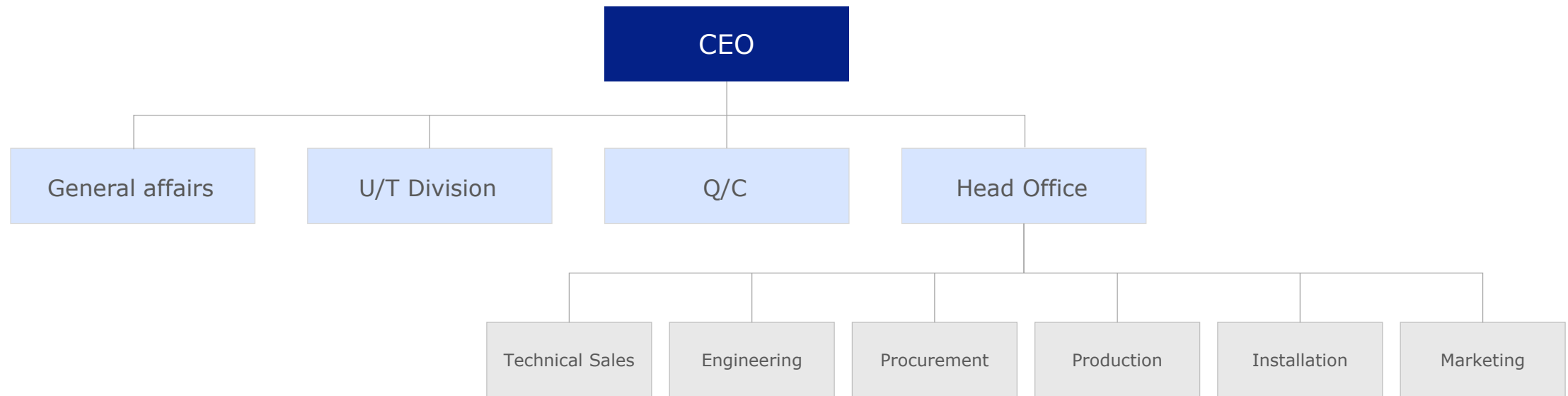


## · REGISTERED SHIPYARD (OVERSEAS)



# Organization Structure

We will grow together based on the best expertise and trust.





# Company Facilities

It's a company building.





# Kormarine Exhibition



**KORMARINE 2023**  
OCT 24(TUE) - 27(FRI)  
BEXCO, BUSAN, KOREA

MAP, SCHEDULE, SUPPORT, OFFICE, CONTACT

**KORMARINE 2021**  
International Marine, Shipbuilding, Offshore, Oil & Gas Exhibition  
OCT 19(TUE) - 22(FRI), BEXCO, BUSAN, KOREA

**KORMARINE 2019**  
International Marine, Shipbuilding, Offshore, Oil & Gas Exhibition  
OCT 22(TUE) - 25(FRI), BEXCO, BUSAN, KOREA

**OFFSHORE KOREA 2018**  
BEXCO · BUSAN · KOREA  
October 10(Wed) - 12(Fri)

**KORMARINE 2017**  
International Marine, Shipbuilding, Offshore, Oil & Gas Exhibition

EXHIBITION / CONFERENCE / EVENT  
**OFFSHORE KOREA 2016**  
BEXCO · BUSAN · KOREA  
October 19(Wed) - 21(Fri)

**KORMARINE 2015**  
Oct. 20(Tue)-23(Fri) | Bexco, Busan, Korea  
INTERNATIONAL MARINE, SHIPBUILDING & OFFSHORE EXHIBITION

[www.h-kme.co.kr](http://www.h-kme.co.kr)

We, KME CO.,LTD have a higher self-esteem for our electric engineering and product quality. But, not satisfied with the current customer's satisfaction we will continue developing new business field and finding new markets. The best quality, best service, new product development under a management philosophy make our customer higher satisfied.



# Supply Products

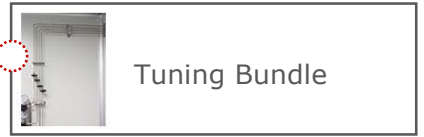
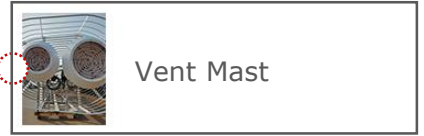
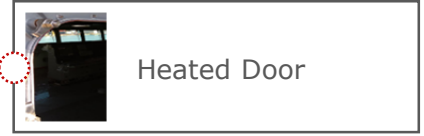
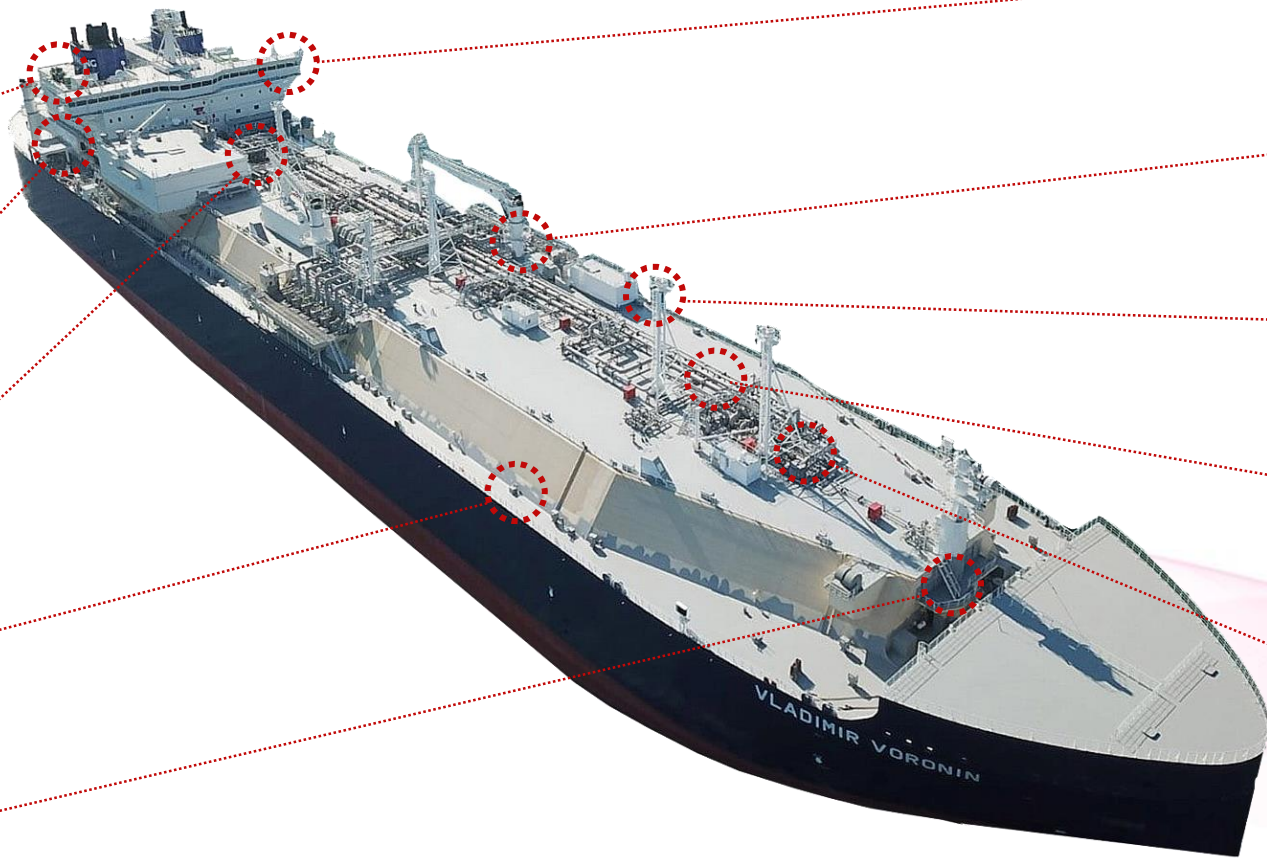
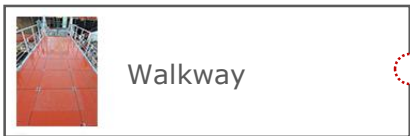
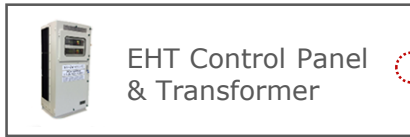




# THERMON HEAT TRACING SYSTEM



WORLD LEADER IN INDUSTRIAL PROCESS HEATING



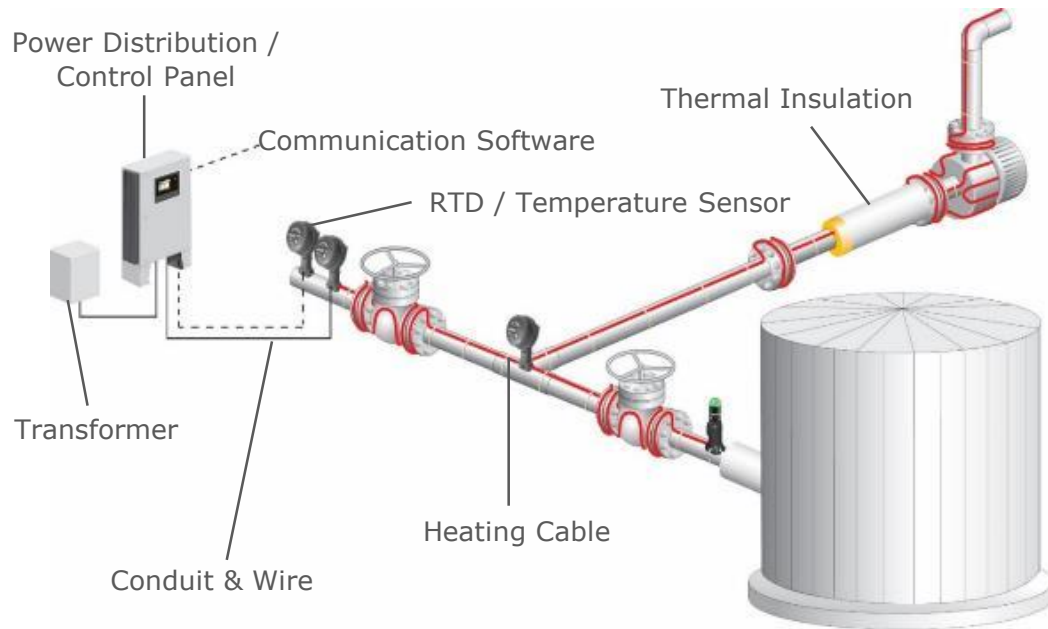


# THERMON HEAT TRACING SYSTEM



WORLD LEADER IN INDUSTRIAL PROCESS HEATING

## COMPONENTS OF A TURNKEY HEAT TRACING SOLUTION



## HEAT TRACING END MARKETS

- Petroleum Production
- Refining and Gas Processing
- LNG Tank Foundations, Terminals & Pipelines · Petroleum Production
- Power Generation
- Chemical Production
- Snow & Ice Melting
- Pharmaceuticals
- Mining
- Wastewater Management
- Arctic Marine

# THERMON HEAT TRACING SYSTEM



WORLD LEADER IN INDUSTRIAL PROCESS HEATING



## BSX™

- Freeze Protection and Temperature Maintenance to 65°C
- Maximum Exposure Temperature 85°C



## KSX™

- Freeze Protection and Temperature Maintenance up to 121°C
- Maximum Exposure Temperature 121°C



## HTSX™

- Freeze Protection and Temperature Maintenance to 150 °C
- Maximum Exposure Temperature 250°C



## HPT™

- Freeze Protection and Temperature Maintenance up to 215°C
- Maximum Exposure Temperature 260°C

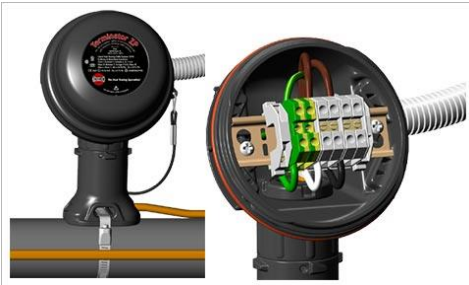


## MIQ™

- Freeze Protection and Temperature Maintenance to 500°C
- Maximum Exposure Temperature 600°C

- WE HAVE HEATING CABLES FOR ALL YOUR TEMPERATURE NEEDS -

# THERMON HEAT TRACING SYSTEM



## ZP

(Power Junction box)

Non-metallic kits are designed to fabricate power connections of an electric heat trace circuit.



## ZE / ZS

(End Termination Kit)

Non metallic kits are designed to fabricate in-line splices of an electric heat trace circuit.



## ZT

(Thermostat Junction Box)

ZT is designed to provide pipe-wall or tankwall sensing control of electric heat trace circuits.



## ECM

(Electronic control Junction Box)

Terminator ECM is an electronic control module specifically designed for controlling electric heat trace circuits. Serves as both the temperature control as well as the sensor and power connection for a heat trace circuit.



## ZE-B

(LED End of Circuit Light Kit)

Non metallic kits are designed to fabricate in-line splices of an electric heat trace circuit.



# Terminator™ Heating Cable Connection/Termination Kits

THERMON The Heat Tracing Specialists®

Designed and manufactured for use with Thermon heating cables.



## Features and Benefits . . .

### Engineered Polymer Construction

- Minimum installation temperature -60°C
- Exposure rating +232°C
- Corrosion resistant
- UV resistant
- High impact resistant

### Terminal Block Forward Design

- Easy access to terminal block for wiring
- Snap-on DIN rail for permanent mounting

### Design and Installation Flexibility

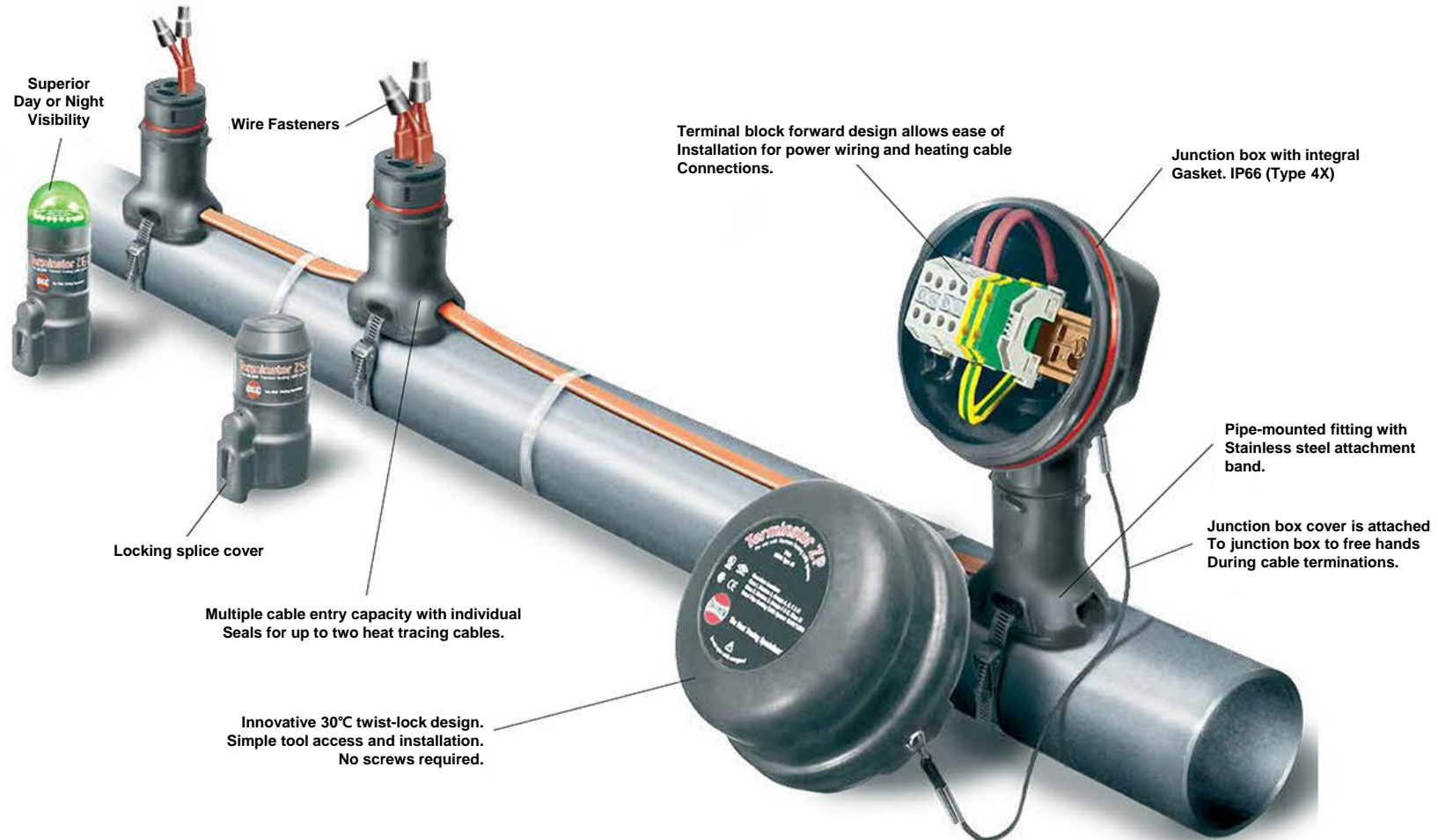
- One kit can serve as a power, splice, tee and end connection
- Above thermal insulation
- Easy access to allow heating circuits to be checked and inspected

### Triple-Cavity Grommet

- Multiple cable entry capacity
- Independent sealing for each heating cable
- Integral triple cavity grommet provides strain-relief for the cable

### Complies to Worldwide Approval Requirements

- Suitable for use in potentially explosive atmospheres
- Certified for use in ordinary (nonclassified) areas, hazardous (classified) areas, and Zone 1 and Zone 2 classified areas
- Provides IP66 (Type 4X) rating
- Same termination system can be used anywhere in the world



ZP... power connection kit is designed for connecting up to three heating cables to power. The heating cable and incoming power are connected in a terminal block utilizing nickel-plated copper terminals to ensure the electrical integrity of the connection over time.



ZL... End-of-circuit light kit is designed to provide visual indication of an energized heating circuit. The kit may be utilized as an end termination or a power connection. Electrical connections are made in a terminal block utilizing nickel-plated copper terminals to ensure the electrical integrity of the connection over time.



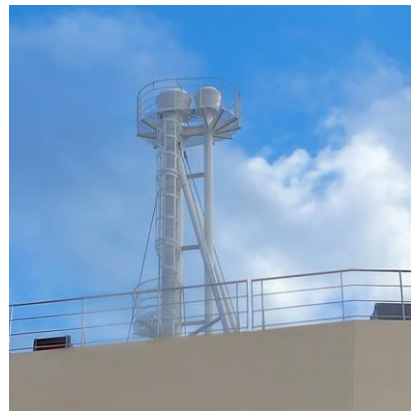
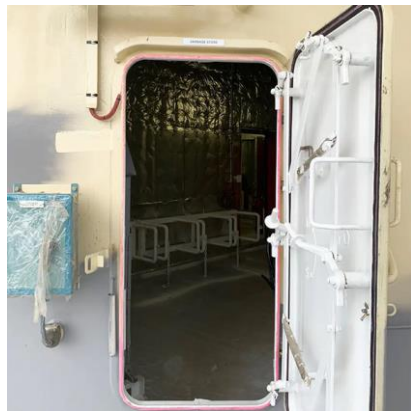
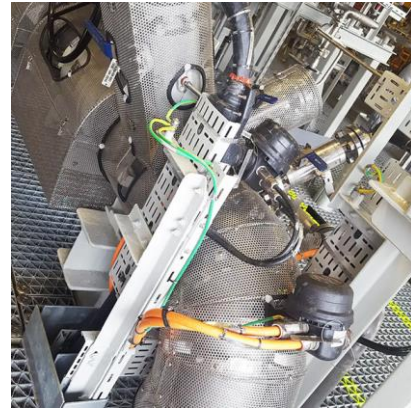
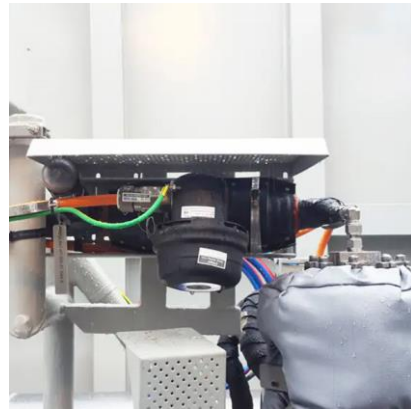
ZS/ZE... Kit is designed to fabricate accessible out-side-the-insulation splices or end terminations of Thermon heating cables. (For applications requiring T-splices the Terminator ZP may be used.)



ZE-B... End-of-circuit light Kit is designed to provide visual indication of an energized heating circuit. The Standard Terminator Beacon utilizes a high intensity green LED assembly for superior day or night visibility. This light is also available with high intensity red LED.





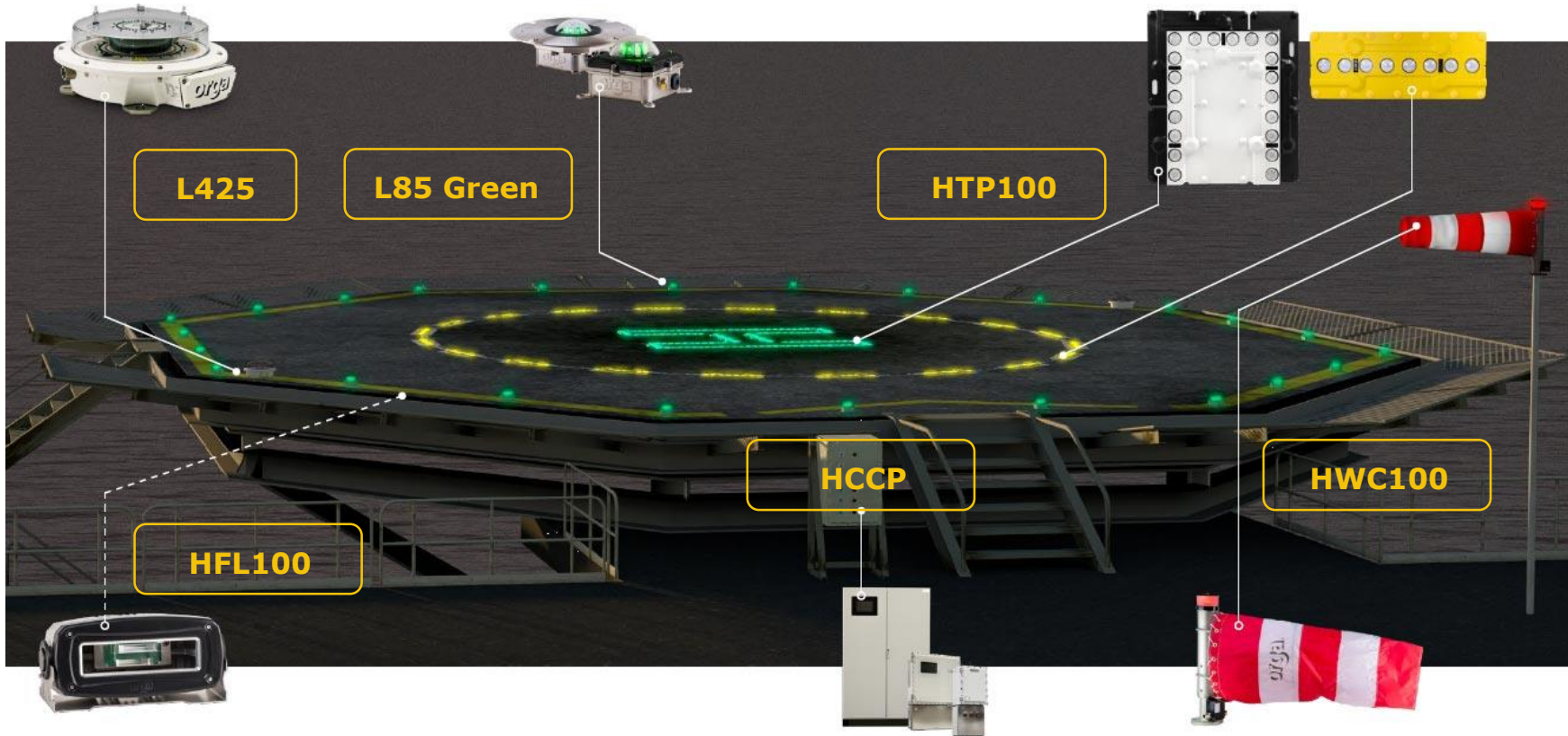




# ORGA HELIDECK LIGHTING



## ① HELIDECK LIGHTING SYSTEM



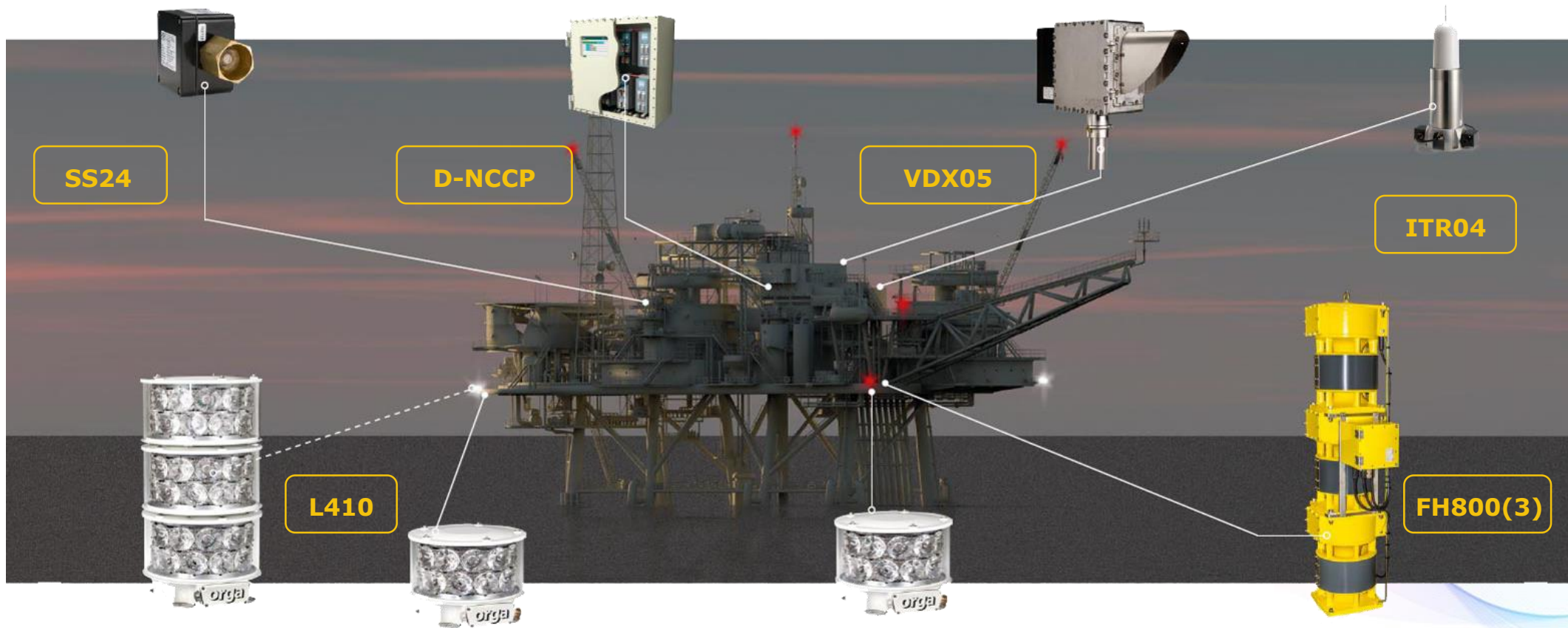
- Compact and rugged construction
- Resistance to vibration
- Integrated terminal box
- Quick opening for installation
- LED perimeter lights with very long operating life (up to 50.00hours)



# ORGA HELIDECK LIGHTING



## ② AIDS TO NAVIGATION SYSTEM



# PHOENIX MECANO EX ENCLOSURES

APPLICATED TO DSME TCO PROJECT

## EX POLYESTER ENCLOSURES



- Range comprises sizes of 75 x 80 x 55 mm to 405 x 400 x 120 mm
- Supplied as component-certified empty enclosures and pre-assembled as Ex e or Ex ia approved enclosures
- Body consists of glass-fibre-reinforced polyester with a graphite additive

## EX STAINLESS STEEL ENCLOSURES



- Suitable for use in harsh and aggressive environments
- Sizes from 100 x 100 x 61 mm to 200 x 600 x 121 mm
- Body takes the form of a steel structure with an raised sealing edge on the base



# PHOENIX MECANO EX ENCLOSURES

APPLICATED TO DSME TCO PROJECT

## EX ALUMINUM ENCLOSURES



## EX COMBI BOX



- A broad range of products is available
- Sizes from 64 x 58 x 34 mm to 600 x 600 x 200 mm
- Suitable for universal use in aggressive environments and in various climate zones
- Body consists of die-cast aluminum AlSi 12

- Provides an elegant and rationally priced remedy in the structuring of Ex control enclosures
- Available in three sizes – 177 x 177 x 145 mm,
- 177 x 360 x 145 mm and 360 x 360 x 145 mm
- A further highlight is the facility for easy wall-mounting

# DEN HAAN ROTTERDAM NAVIGATION LIGHT



NAVIGATION LIGHTS WITH LED OR INCANDESCENT BULB FOR SAFETY AT SEA



## DHR230RCL

### • APPLICATION

- All types of seagoing vessels, such as tugs, pilot vessels, high speed vessels et cetera

### • CONTROL PANEL FUNCTIONS

- On/off switch of the light source
- On/off switch of the panel
- Two-step speed control
- Focus control
- Pan/tilt through joystick

### • SPECIFICATIONS



Excellent optics



Light Weight Construction



Maintenance friendly



Waterproof IP66



Robust design



# DEN HAAN ROTTERDAM NAVIGATION LIGHT



NAVIGATION LIGHTS WITH LED OR INCANDESCENT BULB FOR SAFETY AT SEA



## DHR320RCP

### • APPLICATION

- All types of seagoing vessels, such as tugs, pilot vessels, high speed vessels et cetera

### • CONTROL PANEL FUNCTIONS

- On/off switch of the light source
- On/off switch of the panel
- Two-step speed control
- Focus control
- Pan/tilt through joystick

### • SPECIFICATIONS



Excellent optics



Light Weight Construction



Maintenance friendly



Focus control



LED technology



Waterproof IP66

# DEN HAAN ROTTERDAM NAVIGATION LIGHT



NAVIGATION LIGHTS WITH LED OR INCANDESCENT BULB FOR SAFETY AT SEA



## DHR70N POLAR NAVIGATION LIGHT

### • APPLICATION

- Sea-going vessels navigating in Arctic regions of more than 50m in length / Inland navigation

### • SPECIFICATIONS



Bulb 28s Max. 65W



Waterproof IP56



Seawater resistant



Non-magnetic



230VAC 50/60Hz



Visibility : 3 NM - 6 NM



Designed for Polar regions



Heating Element prevents ice accretion



Fresnel lens :  
UV and shock resistant polycarbonate



Extreme operation temperature :  
-52°C up to +55°C (RMRS)

# DEN HAAN ROTTERDAM NAVIGATION LIGHT



NAVIGATION LIGHTS WITH LED OR INCANDESCENT BULB FOR SAFETY AT SEA



## DHR80 LED POLAR NAVIGATION LIGHT



DHR80N POLAR  
(-52°C to 55°C)

DHR80N  
(-40°C to 55°C)

### • APPLICATION

- Sea-going vessels over 50m in length

### • MATERIALS

- Black, hard anodized seawater resistant aluminium
- POM insulation sleeves to prevent galvanic corrosion
- UV Resistant borosilicate glass lens
- Epoxy potted power supply for maximum protection

### • SPECIFICATIONS



Waterproof IP66



Excellent thermal management



Maintenance friendly



230 VDC (-20% / +30%)



Main and spare LED Modules

# INTERTEC INSTRUMENTATION ENCLOSURES

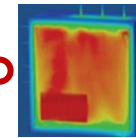
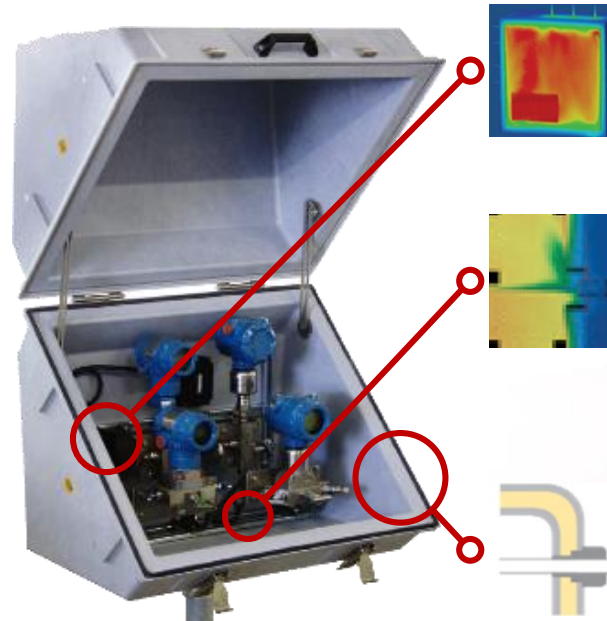


## ENCLOSURES

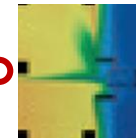
### Composite-GRP offers amazing protection possibilities

- Ingress protection (to IP68)
- Fire safety (to 120 minutes)
- Extreme thermal insulation (Arctic conditions)
- Heat resistance (to 160°C)
- Explosion proofing (Ex e, Ex p, CSA/NEMA 4X)
- Proof against wind, blast, earthquake
- Anti-static
- Corrosion resistance
- UV resistance
- Leak resistance
- Wireless friendly, or EMC shielded
- Frangibility

### INTERTEC exploits GRP's intrinsic efficiency to design highly-optimized solutions



Good thermal efficiency relies on enclosure structural materials, and the positioning of internal Elements.



'Thermal short cuts caused by insulation gaps joints or connections such as this cable gland in a steel cabinet, can dramatically decrease thermal efficiency, leading to cold spots and condensation.



Perfectly uniform insulation - with no thermal short cuts from gaps, joints or fixings - is achieved by INTERTEC's 'embedded' insulation technique - as connections - such as a tube - are made with purpose-designed components to ensure insulation efficiency



# INTERTEC INSTRUMENTATION ENCLOSURES



ENCLOSURES : BROAD CHOICE AND ADAPTABILITY



**Two-part enclosures** are easy to panel mount, with tube entry via top or base. MULTIBOX has thick and shallow sections, either of which can be used as the door. 12 sizes.



**Diagonally opening enclosures** give clear access to field equipment, and may be installed vertically or horizontally. DIABOX allows tube entry via rear or base. 5 sizes.



**MINIBOX** is sized to provide cost-effective housing to protect close-coupled single-transmitter installations.



**UNIBOX** enclosures swing open for easy access to all four faces of field equipment. They are ideal where tube entry is made via the base. 4 sizes.

# INTERTEC INSTRUMENTATION ENCLOSURES



ENCLOSURES (SD 22 / 40 / 50 / 100 / 150)

Transmitter below Shade SD 40



Heating and Cooling System



Sensitive electric equipment or electronic devices are installed in instrument enclosures and protected against the effects of the sun by the various shades

# HELLA MARINE CRUISE SHIP LIGHTING



KD-1280DN/W-C (IP23 / IP44)



**LED Colours** : 2700K , 3000K, 4000K



**Power Supply** : 230V



**Opening Angles** : 85°

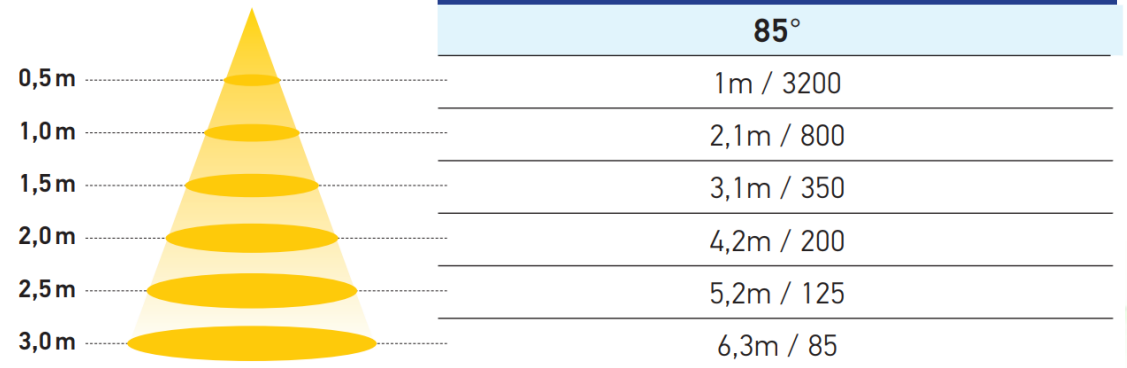
## • KD-1280DN-C, IP23

<b>750lm</b> LIGHT OUTPUT	<b>12.5W</b> POWER CONSUMPTION	<b>143-155MM</b> CUT OUT	<b>IP 23</b> PROTECTION CLASS	<b>85</b> CRI
---------------------------------	--------------------------------------	-----------------------------	-------------------------------------	------------------

## • KD-1280DW-C, IP44

<b>750lm</b> LIGHT OUTPUT	<b>12.5W</b> POWER CONSUMPTION	<b>143-155MM</b> CUT OUT	<b>IP 44</b> PROTECTION CLASS	<b>85</b> CRI
---------------------------------	--------------------------------------	-----------------------------	-------------------------------------	------------------

### Luminous Intensity Distance / Lux 3000 K



# HELLA MARINE CRUISE SHIP LIGHTING



KD-116/4/20DN/W-W (IP23 / IP55)



S102



S102 IP55

## • KD-116/4/20DN-W, IP23

**700lm**  
LIGHT  
OUTPUT

**11W**  
POWER  
CONSUMPTION

**108MM**  
CUT OUT

**IP 23**  
PROTECTION  
CLASS

**90**  
CRI

## • KD-116/4/20/DW-W, IP55

**700lm**  
LIGHT  
OUTPUT

**11W**  
POWER  
CONSUMPTION

**102MM**  
CUT OUT

**IP 55**  
PROTECTION  
CLASS

**90**  
CRI



LED Colours : 2700K , 3000K, 4000K

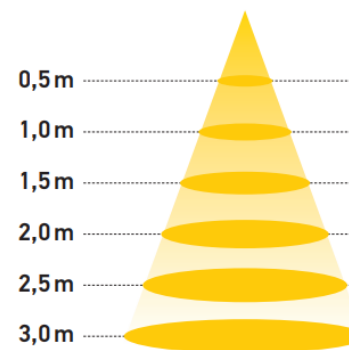


Power Supply : 230V



Opening Angles : 60° , 40° , 20°

	Luminous Intensity Distance /Lux 3000 K		
	60°	40°	15°
0,5m	0,6m / 2600	0,3m / 5200	
1,0m	1,1m / 650	0,7m / 1300	
1,5m	1,7m / 290	1,0m / 580	
2,0m	2,3m / 160	1,4m / 325	
2,5m	2,8m / 105	1,7m / 210	
3,0m	3,4m / 72	2,1m / 145	





# LEGRAND SOCKET & SWITCH



## SOCKET



### Italian type

- Finishes : White
- Connection method : with screws
- Characteristics : 10 A – 250 VAC
- Capacity : 2 x 4mm<sup>2</sup>
- Stripping : 9mm
- Screwdriver : cross-head 2 or 4mm flat-blade

### Swiss type

- Finishes : White
- Connection method : automatic terminals
- Characteristics : 10 A – 250 VAC
- Capacity : 2 x 1.5mm<sup>2</sup>
- Stripping : 12mm

### Australian type

- Finishes : White
- Connection method : with screws
- Characteristics : 10 A – 250 VAC
- Capacity : 2 x 4mm<sup>2</sup>
- Stripping : 13mm
- Screwdriver : Cross-head 2 or 4mm flat-blade

### French type

- Finishes : White
- Connection method : with screws
- Characteristics : 10/16 A – 250 VAC
- Capacity : 2 x 4mm<sup>2</sup>
- Stripping : 10mm
- Screwdriver : 4mm flat-blade

# LEGRAND SCOKET & SWITCH



## USB CHARGING SOCKET



### Type-A

- For recharging portable devices
- Conform to IEC 62684-2011-01
- Surge protection > 1kV
- Consumption in passive mode < 0.07 W
- Power supply AC/DC efficiency at highest level (VI)
- 2 x 2.5mm<sup>2</sup> screw terminals
- Class II SELV
- Supplied cordless
- 5 V – 2.4 A – 12 W



### Type-C

- Universal charger for portable devices
- Conform to IEC 62680-1-3
- Surge protection > 1kV
- Consumption in passive mode < 0.07 W
- Power supply AC/DC efficiency at highest level (VI)
- 2 x 2.5mm<sup>2</sup> screw terminals
- Class II SELV
- Supplied cordless
- 5 V – 3 A – 15 W

# LEGRAND SCOKET & SWITCH



## COLOUR-LIGHTING DIMMERS

### Common

- Allow the user to create lighting ambiances
- For (LEDs) DALI ballasts and drivers
- For controlling max. 21 RGB (Red/Green/Blue)
- Luminaires
- Configuration via "learn" button
- Ideal for show-rooms, shops, restaurants, hotels, beauty salong
- Work with power supply Cat.No 0 035 15
- White



### Dimmer – 1area

- Allows manual change of colours



### Dimmer – 1 to 4 area

- Allows the creation of up to 4 lighting ambiances in up to 4 areas
- For installation in 2-module flush-mounting box depth 50mm
- Multicolour dimming
- Light adjustments :
  - colours : via touch chromatic circle
  - intensity : via bargraph
- Supplied with support

# LEGRAND SCOKET & SWITCH



## SWITCH & RJ45



### SWITCH

- Degree of impact strength (IK) : IK04
- Nominal voltage : 250 V
- Rated current : 10 A
- Switching current for fluorescent lamps : 10 AX
- Connection type : Screwed terminal
- Min. depth of built-in installation box : 30 mm
- Operating / setting temperature : -5-50 °C
- Storage temperature : -10-70 °C
- Voltage type : AC
- Frequency : 50-60 Hz



### RJ 45

- Data rate up to 10 GigaBit/s.
- Support high capacity PoE applications.
- Power over Ethernet pass electric power along with data on twisted pair Ethernet cabling.
- Equipped with a transparent protective dust cover protecting the connector.
- White



# DECKMA

# NAVIGATION & LIGHTING CONTROL PANEL

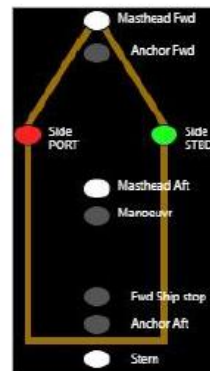


CONTROL PANEL NLS3000



## APPLICATION

In general, the system is meant for control and monitor the ships navigation lights. In addition, this system is also capable of control the navigation lights heater and also the outdoor deck illumination lights. The system monitors and handles all of its multiple power supplies and is capable of manually and automatically select the power supplies in case of a failure of one of these.



## SHIP MIMIC

In addition to the LANTERN button indication, all lantern states are also indicated in a mimic. Main and backup lanterns are merge together here. They are indicated at their schematic position and with their name and real color.



# Supply Items

## 「 ACCOMMODATION PARTS 」

### • UNIT TOILET

- LED SHIP'S NAME BOARD
- LABORATORY FURNITURES & EQUIPMENT
- MEDICAL OXYGEN SYSTEM
- MEDICAL EQUIPMENT

### • WORKSHOP EQUIPMENT

- GYMNASIUM EQUIPMENT
- ENTERTAINMENT EQUIPMENT
- SAUNA BOOTH
- GALLEY, LAUNDRY, CATERING FURNITURE

### • MARAHRENS : SAFETY SIGNS

- LLL(LOW LOCATION LIGHTING) SYSTEM
- CONFERENCE ROOM
- SCREEN GOLF
- CITADEL

# UNIT TOILET

High-quality Customized Toilet System





# PREFABRICATED WET UNITS

With many years of experience and specialised competence, KME offer fully fitted wet units. The KME wet units are ideal for marine accommodations, from cruise ships to offshore installations.

The KME wet units, whether standard or custom made, are manufactured according to the strictest rules and regulations and are fabricated from only first class materials.

In our design the emphasis is on using durable solutions to ensure maximum quality, comfort and well-being of our customers, whether being a ship owner, ship yard or end user.

The units are manufactured with great deal of consideration given to the ease of handling and installation.

Throughout the production process the units are subjected to strict quality control to ensure that all of our materials conform to our policy of supplying only first class quality.

KME products can be specially manufactured according to customer requirements and pursue the highest product quality.



**Thank you**

## Bath & Shower Type

# HIGH-END UNIT

**KME UNIT TOILET** provides type-specific functions, is durable, designed and systemized, and provides one finished product.

We can directly produce and supply products of Various designs, such as shower booth type, bathtub type as well as the standard of the customer.

Flexible Design

Simple Installation

Special production

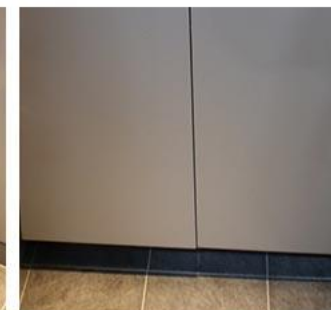
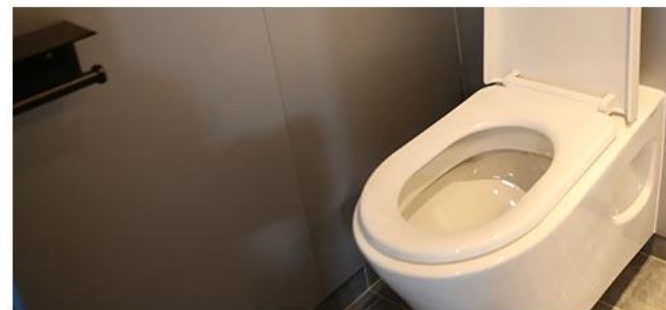
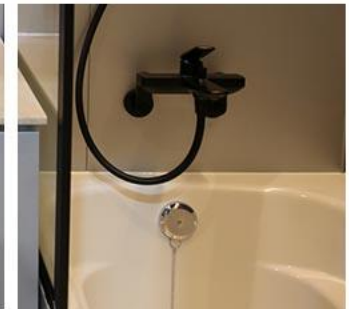
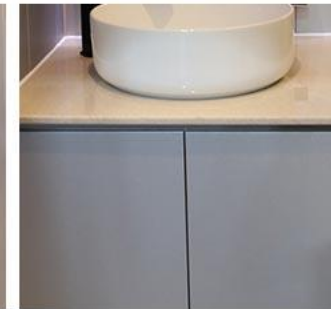
Hight Quality

Competitive Pricing

A strict regulation

Easy Handling

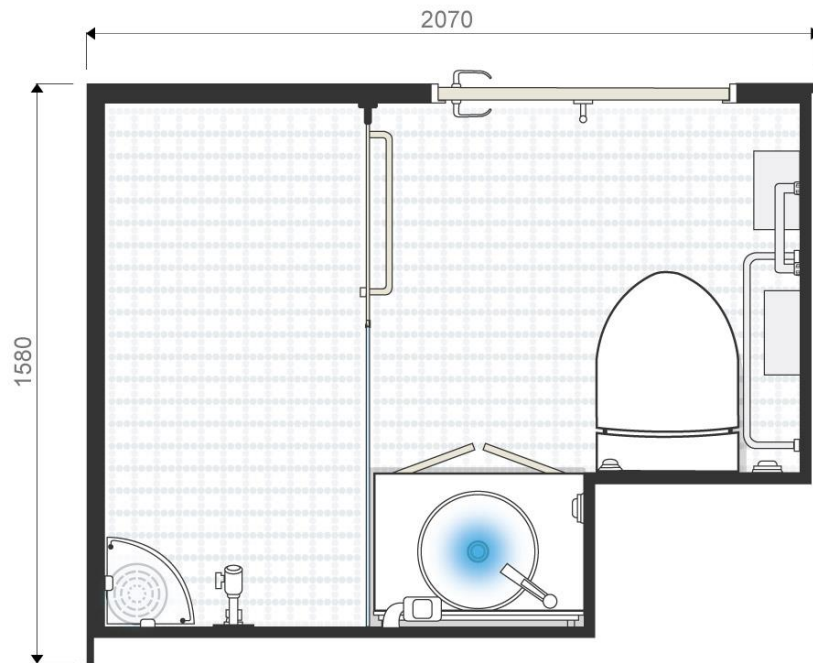
Made from Grade 1



## HIGH-END TYPE

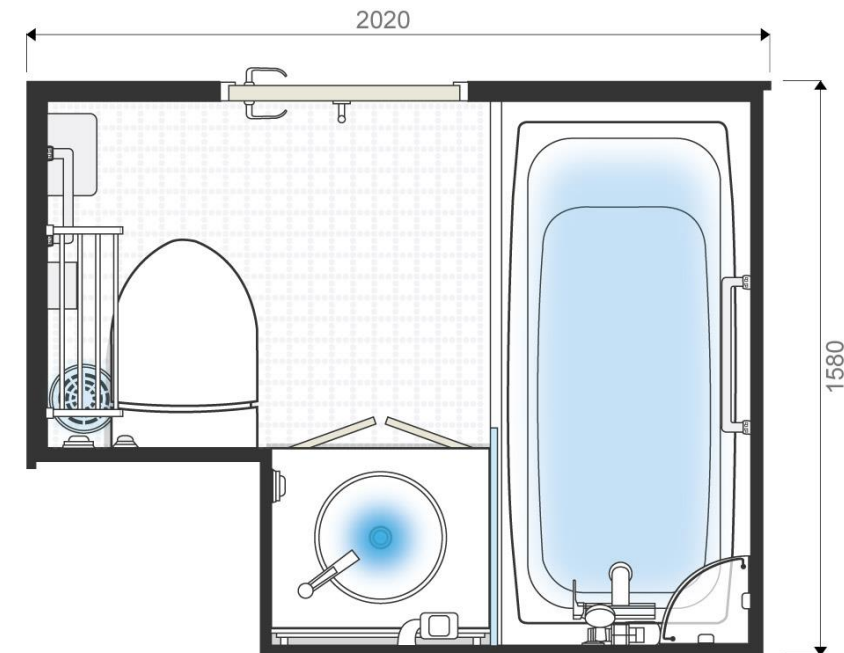
# PREFABRICATED WET UNIT

We can directly produce and supply products of various designs, such as shower booth type, bathtub type, as well as the standard of the customer.



## SHOWER TYPE

- Direct production and supply of products.
- Create as requested by the customer.



## BATH TYPE

- Direct production and supply of products.
- Create as requested by the customer.

## HIGH-END TYPE

# Specifications

No	Description	Specification	Model no	Q'TY / SET	
				Shower	Bath
1	FLOOR	MOSAIC TILE ON 3.2 mm STEEL PLATE (GROUTING : GRAY CEMENT)	KME STANDARD	1	1
2	INSIDE WALL PANEL	PAINTED ON 0.6mm GALV'D STEEL PLATE W/15mm MINERAL WOOL, TOTAL THK. 30mm	KME STANDARD	1	1
3	OUTSIDE WALL PANEL	PVC LAMINATED ON 0.6mm GALV'D STEEL PLATE W/15mm MINERAL WOOL, TOTAL THK. 20mm	KME STANDARD	1	1
4	DOOR FRAME	BAKED ENAMEL PAINTED ON 1.5mm STEEL PLATE CLEAR OPENING (600CW x 1800CH, 800CW x 1800CH (HOSPITAL ONLY))	KME STANDARD	1	1
	DOOR BLADE W/LOCK	PVC LAMINATED ON 0.6mm GALV'D STEEL PLATE DOOR LOCK : INDICATOR MORTISE LATCH	KME STANDARD	1	1
5	WATER CLOSET (YARD SUPPLY)	WALL MOUNTED VACUUM TYPE WHITE VITREOUS CHINA W/BIDET, "YARD SUPPLY & KME INSTALL"	-	1	1
6	SOIL PIPE (VACUUM SYSTEM)	Ø50 OUTLET W/RUBBER HOSE JOINT (YARD SUPPLY)	-	1	1
7	HI-MACS TOP W/WASH BASIN	TOPCOUNTER(12t) & WHITE VITREOUS CHINA SINGLE LEVER MIXED FAUCET W/POP UP WASTE	-	1	1
8	UNDER CABINET	FLOATING TYPE UNDER CABINET 600(W)*750(H)425(D)_HOSPITAL ONLY, 600(W)*750(H)*525(D)	KME STANDARD	1	1
9	SHOWER MIXER	MIXING VALVE SINGLE LEVER TYPE W/TELEPHONE TYPE SHOWER HEAD & HOSE & SLIDE BAR	-	-	1
10	SHOWER MIXER	BUILT-IN SHOWER TYPE	-	1	-



## HIGH-END TYPE

# Specifications

No	Description	Specification	Model no	Q'TY / SET	
				Shower	Bath
11	LED MIRROR	600W x 800H W/LED LIGHT	KME STANDARD	1	1
12	LED DOWN LIGHT	CEILING MOUNTING TYPE (AC 220V, 60Hz, 1Ø, 13W, IP44)	-	1	1
13	FLOOR SCUPPER & DRAIN / WASTE PIPE	SUS 304 FRAME W/Ø150 SUS 304 GRATING & 40A SPP W/RUBBER HOSE JOINT	KME STANDARD	1	1
14	EXHAUST VALVE	WALL MOUNTING TYPE W/ELBOW CONNECTOR KU-100/WHITE	KME STANDARD	1	1
15	DOOR SWITCH	POLAR WHITE (AC 250V 16AX / 1WAY, IP 20)	KME STANDARD KSW-F11	1	1
16	JUNCTION BOX (FOR LIGHT & RECEPTACLE)	ABS RESIN (6-GLAND, 9P), IP44	KME STANDARD	1	1
17	JUNCTION BOX (FOR 2W SPEAKER)	ABS RESIN (4-GLAND, 6P), IP44	KME STANDARD	1	1
18	SPEAKER(2W) (FOR U/T)	FLSH TYPE (YARD SUPPLY)	-	1	1
19	SHOWER BOOTH	HINGE TYPE : SUPPORT W/8T TOUGHEN GLASS (TRANSLUCENT)	KME STANDARD	1	-
20	TOWEL SHELF & BAR	SUS304 / 535 x 211 x 117	-	-	1
21	TOWEL HANGER	SUS &CHROME PLATED BRASS	-	1	-

## HIGH-END TYPE

# Specifications

No	Description	Specification	Model no	Q'TY / SET	
				Shower	Bath
22	SOAP DISH	PLASTIC & CHROME PLATED	-	1	1
23	SHOWER SHELF	GLASS & CHROME PLATED BRASS	-	1	1
24	DOUBLE PAPER HOLDER	SUS & CHROME PLATED BRASS	-	1	-
25	PAPER HOLDER (COLOR : BLACK)	SUS & CHROME PLATED BRASS	-	-	1
26	GRAB RAIL	SUS & CHROME PLATED BRASS	-	-	2
27	DOOR ADJUSTER	SUS & CHROME PLATED BRASS	-	1	1
28	COAT HOOK	STAINLESS STEEL COLOR : SILVER	-	1	1
29	RECEPTACLE (FOR HAIR DRYER)	AC 250V, 50/60Hz, 16A	KME STANDARD	1	1
30	RECEPTACLE (FOR BIDET)	AC 250V, 50/60Hz, 16A	KME STANDARD	1	1
31	HOT WATER PIPE	Ø12 PVC COVERED COPPER PIPE W/BITE TYPE UNION BALL VALVE (Ø12xPF1/2") W/ SUS FLEX. HOSE (L=300, PT1/2" MALE)	KME STANDARD	1	1
32	FRESH WATER PIPE	Ø12 PVC COVERED COPPER PIPE W/BITE TYPE UNION BALL VALVE (Ø12xPF1/2") W/ SUS FLEX. HOSE (L=300, PT1/2" MALE)	KME STANDARD	1	1

## HIGH-END TYPE

# Specifications

No	Description	Specification	Model no	Q'TY / SET	
				Shower	Bath
33	BATH TUB	GLASS FIBER REINFORCED PLASTIC(SMC) W/OVER FLOW WHITE (720X x 1500L)	KME STANDARD	-	1
34	GLASS PARTITION	AL, FRAME W/8.0T TOUGHEN GLASS(TRANSLUCENT)	KME STANDARD	-	1
35	STOP V/V (FOR BIDET)	CHROME PLATED BRASS	-	1	1
36	WASTE BASKET	ABS(WHITE), 6LITER 225(W) x 240(H) x 135(D)	-	1	1

## Bath & Shower Type

# GENERAL UNIT

**KME UNIT TOILET** provides type-specific functions, is durable, designed and systemized, and provides one finished product.

We can directly produce and supply products of various designs, such as shower booth type, bathtub type as well as the standard of the customer.

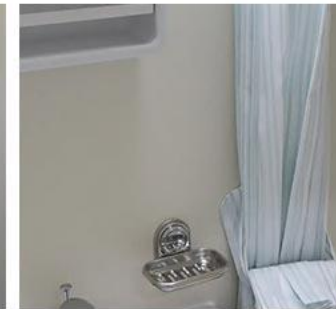
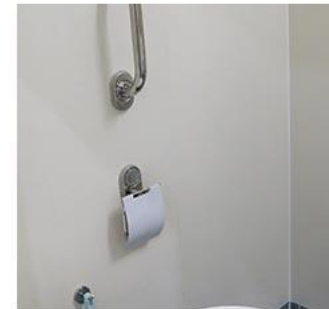
**Flexible Design**

**Simple Installation**

**Special production**

**Hight Quality**

**Competitive Pricing**

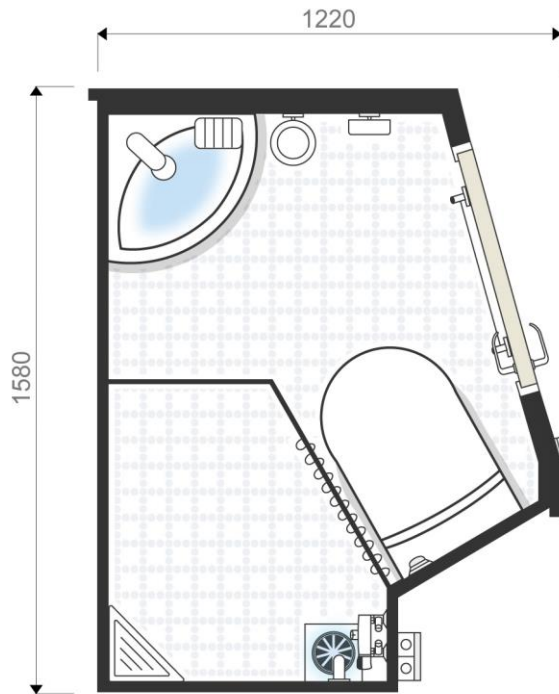




## GENERAL TYPE

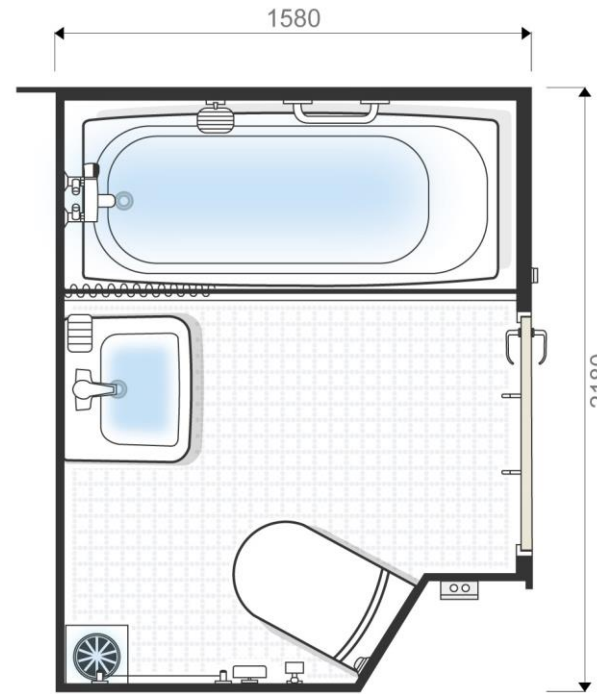
# PREFABRICATED WET UNIT

We can directly produce and supply products of various designs, such as shower booth type, bathtub type, as well as the standard of the customer.



### SHOWER TYPE

- Direct production and supply of products.
- Create as requested by the customer.



### BATH TYPE

- Direct production and supply of products.
- Create as requested by the customer.

GENERAL TYPE

# Specifications

No	Description	Specification	Model no	Q'TY / SET	
				Shower	Bath
1	FLOOR	NON-SLIP MOSAIC TILE & ON 3.2mm STEEL PLATE	-	1	1
2	INSIDE WALL PANEL	PVC LAMINATED ON 0.6mm GALV'D STEEL PLATE W/15mm MINERAL WOOL, TOTAL THK. 30mm	-	1	1
3	OUTSIDE WALL PANEL	PVC LAMINATED ON 0.6mm GALV'D STEEL PLATE W/15mm MINERAL WOOL, TOTAL THK. 20mm	-	1	1
4	DOOR & FRAME	BLADE : PVC FILM LAMINATED ON 0.6mm GALV'D STEEL SHEET CLEAR SIZE : 600(W) x 1800(H), 800(W) x 1800(H)_111 RM. ONLY FRAME : BAKED ENAMEL PAINTED ON 1.6mm STEEL PLATE	-	1	-
		BLADE : PVC FILM LAMINATED ON 0.6mm GALV'D STEEL SHEET CLEAR SIZE : 600(W) x 1800(H) FRAME : BAKED ENAMEL PAINTED ON 1.2mm STEEL PLATE	-	-	1
5	BATH TUB	GLASS FIBER REINFORCED PLASTIC(SMC) W/OVER FLOW WHITE	-	-	1
6	WATER CLOSET	WALL MOUNTED WHITE VITREOUS CHINA VACUUM TYPE (VACDRIN)	-	1	1
7	SOIL PIPE (VACUUM SYSTEM)	Ø50 OUTLET W/RUBBER HOSE JOINT	-	1	-
8	WASH BASIN	WHITE VITREOUS CHINA SINGLE LEVER FAUCET W/POP UP WASTE	-	-	1
	WASH BASIN (CORNER TYPE)	WHITE VITREOUS CHINA SINGLE LEVER FAUCET W/POP UP WASTE	-	1	0

GENERAL TYPE

# Specifications

No	Description	Specification	Model no	Q'TY / SET	
				Shower	Bath
9	SHOWER MIXER	THERMOSTATIC MIXING VALVE W/TELEPHONE TYPE SHOWER HEAD & HOSE & SLIDE BAR	-	1	-
10	BATH MIXER	THERMOSTATIC MIXING VALVE W/TELEPHONE TYPE SHOWER HEAD & HOSE	-	-	1
11	TOILET CABINET	MOULDED PLASTIC BODY W/MIRROR (TC01-AC2-C1)	-	-	1
	TOILET CABINET (CORNER TYPE)	MOULDED PLASTIC BODY W/MIRROR (TC04-SC2-C1)	-	1	-
12	FLOOR SCUPPER & DRAIN / WASTE PIPE	SUS 304 FRAME W/Ø150 SUS 304 GRATING & 40A SPP W/RUBBER HOSE JOINT	-	2	1
13	SHOWER CURTAIN	WATER PROOF TYPE CURTAIN WITH AL. RAIL	-	-	1
		POLYESTER CURTAIN WITH AL. RAIL	-	1	-
14	TASSEL HOOK	CHROME PLATED BRASS(CTH-01)	-	1	1
15	HOT WATER PIPE	Ø12 PVC COVERED COPPER PIPE W/BITE TYPE UNION BALL VALVE (Ø12xPF1/2") W/ SUS FLEXIBLE HOSE(300L)	-	1	1
16	FRESH WATER PIPE	Ø12 PVC COVERED COPPER PIPE W/BITE TYPE UNION BALL VALVE (Ø12xPF1/2") W/ SUS FLEXIBLE HOSE(300L)	-	1	1
17	EXHAUST VALVE	KU-100/WHITE WALL MOUNTING TYPE W/ELBOW CONNECTOR	-	1	1

GENERAL TYPE

# Specifications

No	Description	Specification	Model no	Q'TY / SET	
				Shower	Bath
18	JUNCTION BOX (FOR LIGHT)	ABS RESIN (4-GLAND, 6P), IP44	-	1	1
19	JUNCTION BOX (FOR SPEAKER)	ABS RESIN (4-GLAND, 6P), IP44	-	1	1
20	MIRROR LIGHT	LED11W, CEILING MOUNTING TYPE W/SHAVER SOCKET, IP44 (AC 220V, 60Hz, 1Ø), RECEPTACLE(UNIVERSAL TYPE) WITH ISOLATION TRANSFORMER	-	-	1
		LED 8W, CEILING MOUNTING TYPE W/SHAVER SOCKET, IP44 (AC 220V, 60Hz, 1Ø) WITH ISOLATION TRANSFORMER	-	1	-
21	DOOR SWITCH	KSW-F11, POLAR WHITE (AC 250V 16AX / 1WAY, IP 20)	-	1	1
22	SPEAKER(1W) (FOR U/T)	W/T FLUSH TYPE 1W SPEAKER (YARD SUPPLY)	-	1	1
23	SHOWER COAMING	2.0t SUS PLATE W/Ø12.7 SUS ROUND BAR (HEIGHT : 100mm)	-	1	-
24	CORNER SHELF	SUS & CHROME PLATED BRASS(KS-02)	-	1	-
25	TOWEL BAR	SUS & CHROME PLATED BRASS(TB-03)	-	1	1
26	SOAP DISH FOR WASH BASIN	STAINLESS STEEL(SD-04)	-	1	1
27	SOAP DISH FOR SHOWER	SUS & CHROME PLATED BRASS(SD-03)	-	-	1



GENERAL TYPE

# Specifications

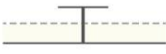


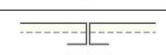
No	Description	Specification	Model no	Q'TY / SET	
				Shower	Bath
28	PAPER HOLDER	SUS & CHROME PLATED BRASS(PH-03)	-	1	1
29	GRAB RAIL	SUS & CHROME PLATED BRASS(GR-03)	-	2	2
30	COAT & HAT HOOK	SUS & CHROME PLATED BRASS(CH-02)	-	1	2
31	DOOR ADJUSTER	SUS & CHROME PLATED BRASS(KDA-02)	-	-	1
		SUS & CHROME PLATED BRASS(938.64.002)	-	1	-
32	TOILET BRUSH	SPONGE TYPE	-	-	1
		BRASS CHROME PLATED & PLASTIC (TOILET BRUSH HOLDER-02)	-	1	-
33	CLOTHES LINE	STAINLESS STEEL(KL-01)	-	-	1

## HIGH-END / GENERAL TYPE

# Technical specifications

### Wall Panel

- Surface finish : 0.6mm thickness galvanized steel sheet finished with decorative material
- Standard width : 510mm, Maximum Length : 2400mm




Type	Model no.	Thickness	Fire class	Weight	Sound reduction	Thermal transmittance
	W-30	30mm	B-0	12kg/m <sup>2</sup>	STC 29dB	1.62kcal/m <sup>2</sup> h°C
	W-30D	45mm	B-15	15kg/m <sup>2</sup>	STC 29dB	0.81kcal/m <sup>2</sup> h°C
	W-50	50mm	B-15	19.2kg/m <sup>2</sup>	STC 39dB RW 42dB	0.52kcal/m <sup>2</sup> h°C
	W-80	Min. 80mm	B-15	24kg/m <sup>2</sup>	STC 44dB	0.48kcal/m <sup>2</sup> h°C

## HIGH-END / GENERAL TYPE

# Technical specifications

### Ceiling Panel

- Surface finish : 0.6mm thickness galvanized steel sheet finished with decorative material
- Standard width : 510mm, Maximum Length : 2400mm

Type	Model no.	Thickness	Fire class	Weight	Sound reduction	Thermal transmittance
	C30	30mm	B-0	12kg/m <sup>2</sup>	STC 52dB	1.62kcal/m <sup>2</sup> h°C
	C30D	45mm	B-15	15kg/m <sup>2</sup>	STC 53dB	0.81kcal/m <sup>2</sup> h°C
 Incl .Steel deck	C30A	30mm	B-0	12kg/m <sup>2</sup>	-	1.62kcal/m <sup>2</sup> h°C

HIGH-END / GENERAL TYPE

# Technical specifications

## Approval certificates

Type	Fire class	Classification / Authority				
		ABS	DNV	KR	LR	BV / MED
KME-UT-W30	B-0	0	0	0	0	0
KME-UT-C30	B-0	0	0	0	0	0
KME-UT-C30A	B-0	0	0	0	0	0
KME-UT-W50	B-15	0	0	0	0	0
KME-UT-W80	B-15	0	0	0	0	0
KME-UT-C30D	B-15	0	0	0	0	0



MARINE SHIP NAME BOARD LED LIGHTING

## SHIP'S NAME BOARD

- KME'S SHIP NAME BOARD LED LIGHTING IS ABLE TO BE PRODUCED ACCORDING TO CUSTOMER'S REQUEST.
- LED LAMPS IN THE SHIP NAME BOARD LED LIGHTING ARE VERY BRIGHT IN THE NIGHT TIME AND ENERGY EFFICIENT.
- IN ADDITION, OUR PRODUCTS CAN MEET IP 56

A photograph of a white LED lighting fixture mounted on a ship's deck. The fixture displays the name 'GUSTAVIA S' in black, illuminated characters. The background shows the ship's structure and a clear sky.

GUSTAVIA S

MARINE SHIP NAME BOARD LED LIGHTING

# SHIP'S NAME BOARD

## KEY FEATURE

- SIZE : STANDARD OR CUSTOM MADE
- BODY MATERIAL : STAINLESS STEEL /WHITE EPOXY  
POWDER COAT AND STOVE  
ENAMELLED(MUNSELL NO. N-9.3)
- FRONT PANEL : POLYCARBONATE 4mm
- PANEL COLOR : WHITE, PANEL TEXT : BLACK
- IP GRADE : IP56

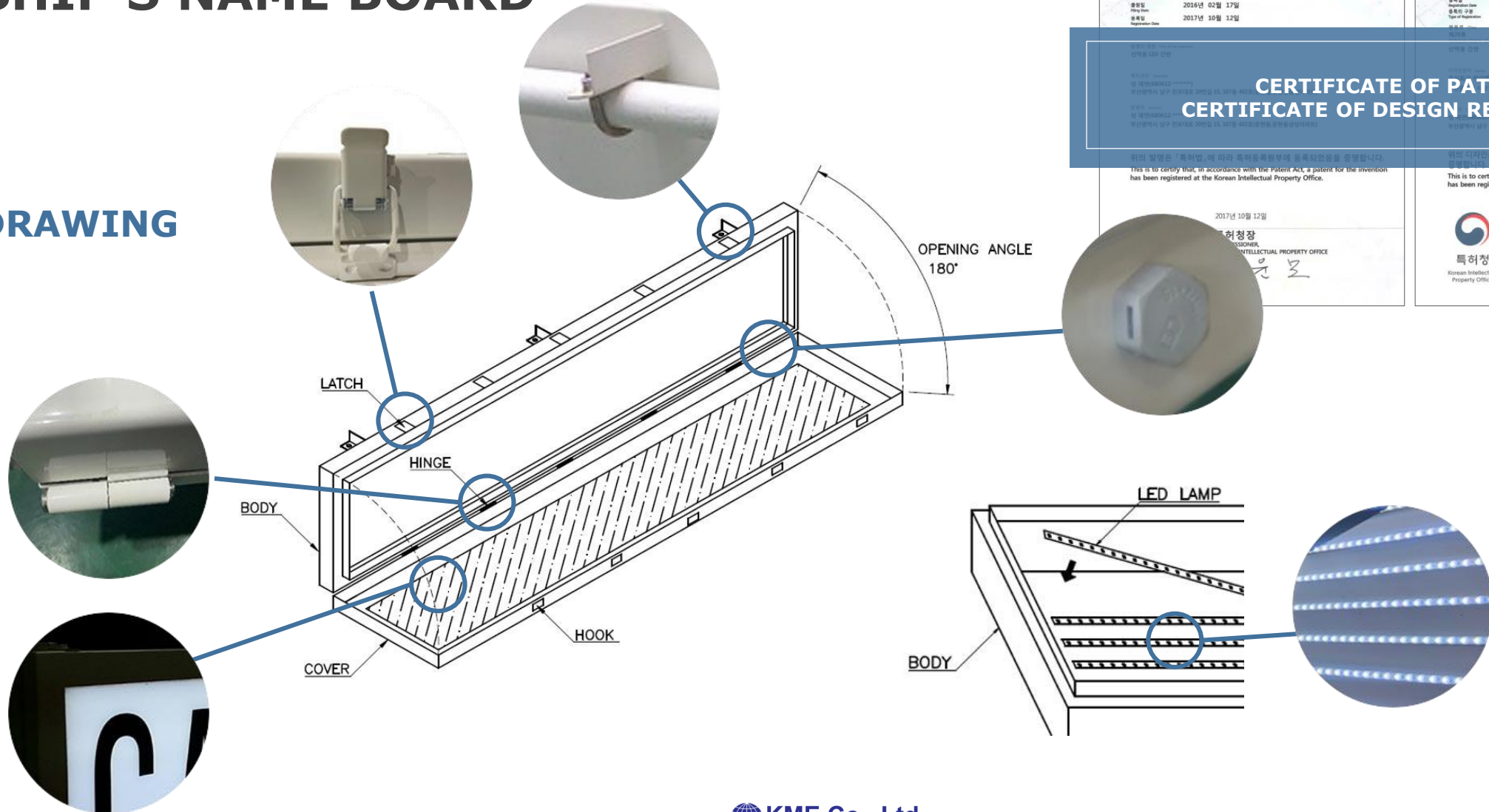




MARINE SHIP NAME BOARD LED LIGHTING

# SHIP'S NAME BOARD

## DRAWING



**특허증**  
CERTIFICATE OF PATENT

특허  
Patent Number 제 10-1787429 호

출원번호  
Application Number 제 10-2016-0018166 호

출원일  
Filing Date 2016년 02월 17일

공표일  
Publication Date 2017년 10월 12일

**디자인등록증**  
CERTIFICATE OF DESIGN REGISTRATION

등록  
Registration Number 제 30-0868013 호

출원번호  
Application Number 제 30-2016-0007858 호

출원일  
Filing Date 2016년 02월 22일

공표일  
Publication Date 2016년 08월 08일

등록의 구분  
Type of Registration 실시 등록  
(Exclusively registered)

**CERTIFICATE OF PATENT & CERTIFICATE OF DESIGN REGISTRATION**

이의 발명은 「특허법」 제 114조 제 1항에 따라 특허등록됨에 따라 등록되었음을 증명합니다.  
This is to certify that, in accordance with the Patent Act, a patent for the invention has been registered at the Korean Intellectual Property Office.

이의 디자인은 「디자인보호법」 제 114조 제 1항에 따라 디자인등록됨에 따라 등록되었음을 증명합니다.  
This is to certify that, in accordance with the Design Protection Act, a design has been registered at the Korean Intellectual Property Office.

2017년 10월 12일  
특허청장  
COMMISSIONER,  
KOREAN INTELLECTUAL PROPERTY OFFICE

2017년 06월 27일  
특허청장  
COMMISSIONER,  
KOREAN INTELLECTUAL PROPERTY OFFICE

# LABORATORY FURNITURES & EQUIPMENTS



FUME CUPBOARD



LAB. FURNITURES



SAFETY CABINET



CHEMICAL STORAGE CABINET



ACID & BASE CABINET



LAB. SINK

# LABORATORY FURNITURES & EQUIPMENTS



VALVE & TAP



EMERGENCY SHOWER  
& EYE WASHER



GAS CHROMATOGRAPHY



SPARK FREE REFRIGERATOR



INCUBATOR



CENTRIFUGE



ION CHROMATOGRAPHY



TITRATOR



DISH WASHER



DENSITY METER



# LABORATORY FURNITURES & EQUIPMENTS



**COULOMETER**



**PH METER**



**WATER PURIFICATION SYSTEM**



**THERMOSTATIC BATH**

# MEDICAL OXYGEN SYSTEM



**OXYGEN GAS MANIFOLD STATION (AUTO CHANGE-OVER)**



**SIMPLE MANIFOLD OPTION : WITH REGULATOR & VALVE**



**MAIN LINE VALVE WITH SECONDARY REGULATOR**



**SHUT-OFF VALVE WITH PRESSURE WATCHES**



**GAS MONITORING & ALARM SYSTEM**



**MEDICAL OXYGEN OUTLET**



**PRESSURE REGULATOR FOR INSIDE**



**PRESSURE SENSOR**

# MEDICAL OXYGEN SYSTEM



**PRESSURE TRANSMITTER  
EXPLOSION PROOF TYPE**



**BEAD HEAD UNIT**



**TROLLEY FOR CYLINDER**



**FLOW METER / HUMIDIFIER**



**PORTABLE OXYGEN KIT**



**MASK & ACCESSORIES**



**MEDICAL BED**



**EXAMINATION COUCH**



**STRETCHER**



**BASKET STRETCHER**

# MEDICAL OXYGEN SYSTEM



PHARMACY REFRIGERATOR



EXAMINATION LAMP



INSTRUMENT CABINET



TREATMENT CART



EMERGENCY CART



I.V POLE



FIRST AID KIT



AED  
(DEFIBRILLATOR)



AUTOMATIC STERILIZER



LARYNGOSCOPE

# MEDICAL OXYGEN SYSTEM



**SUCTION PUMP**



**SPHYGMOMANOMETER  
/STETHOSCOPE**



# WORKSHOP EQUIPMENTS



LATHE MACHINE



VERTICAL MILLING MACHINE



DRILLING MACHINE



HYDRAULIC PRESS



GRINDING MACHINE



BAND SAW



SCISSOR TABLE



WELDING MACHINE



EXTRACTION ARM FOR WELDING



WELDING ROD OVEN

# WORKSHOP EQUIPMENTS



LAPPING MACHINE



FOLDING MACHINE



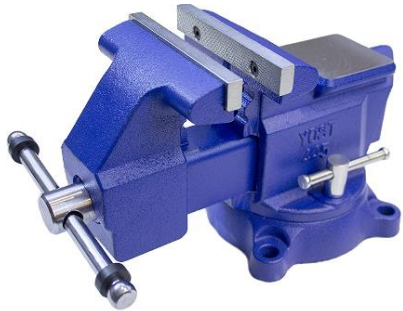
ROLLING MACHINE



SHEET GUILLOTINE SHEAR



PSV TEST BENCH



VISE

# GYMNASIUM EQUIPMENTS



**RUNNING MACHINE**



**CYCLE MACHINE**



**ROWING MACHINE**



**ELLIPTICAL**



**MULTI STATION EXERCISE MACHINE (SINGLE)**



**MULTI STATION EXERCISE MACHINE (TRIPLE)**

# GYMNASIUM EQUIPMENTS



SMITH MACHINE



WEIGHT LIFTING BENCH



PINGPONG TABLE WITH ACCESSORIES



BOXING BAG & GLOVE



WEIGHT SCALE



WALL BAR



# ENTERTAINMENT EQUIPMENTS



**MULTI- SYSTEM  
LED TV (40 inch)**



**MULTI -SYSTEM  
LED TV(43/49 inch)**



**MULTI -SYSTEM  
LED TV(55 inch)**



**MULTI -SYSTEM  
LED TV(65 inch)**



**DVD PLAYER  
(REGION FREE)**



**DVD/BLU RAY PLAYER  
(REGION FREE)**



**AV RECEIVER**



**AMPLIFIER**



**STEREO SYSTEM**



**PROJECTOR**



# ENTERTAINMENT EQUIPMENTS



SCREEN



KARAOKE SYSTEM



WOOFER SPEAKER



SPEAKER



CINEMA SYSTEM

IT RELIEVES FATIGUE

## SAUNA BOOTH

We can supply customized products according to customer's request.

SPRUS is used for the sauna booth wood, and it is manufactured according to the site conditions so that it can be supplied to ships.

It is made of tempered glass so that you can see the inside of the sauna room, and a piano hinge is attached to the door to increase its durability.

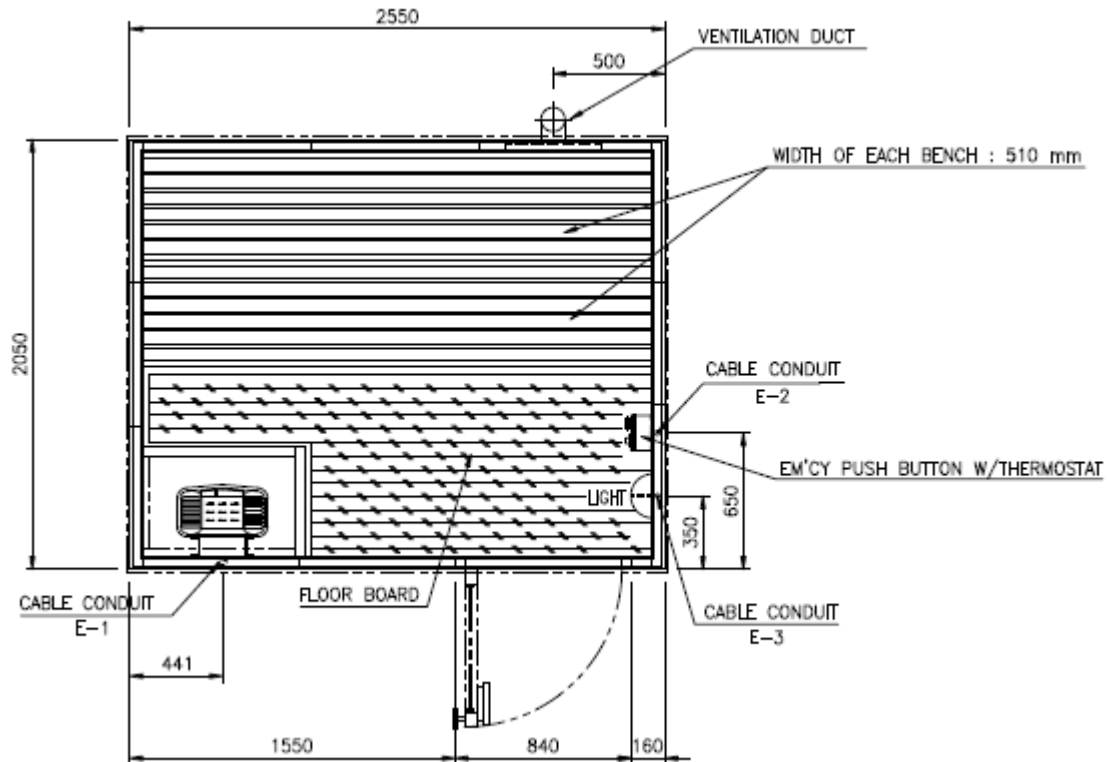
There is no risk of burns as the parts that can come into contact with the human body are finished with wood.

For a comfortable environment, a temperature controller was installed, and an air ventilation system was installed.



IT RELIEVES FATIGUE

# SAUNA BOOTH



- **INSIDE / OUT SIDE** : WOOD(SPRUS)
- **SIZE** : Custom Production
- **SAUNA HEATER** : 6.6kW / 8.0kW / 10kW
- **BENCH** : TWO TIRED
- EMERGENCY PUSH BUTTON WITH THERMOSTAT
- VENTILATION DUCT
- TOUGHED GLASS HINGED DOOR
- HEATER GUARD
- NON COMBUSTIBLE PLATER FOR HEATER
- CONTROL PANEL

IT RELIEVES FATIGUE

# SAUNA BOOTH

Take a shower and open the door.  
Close your eyes and listen to what's inside you.

Pour a ladle of water over a hot stone and listen for hiss.  
As the steam rises like a cloud, your mood will also feel liberated with good heat.

A grill designed to effectively circulate warm air and a nice design will keep you energized and refreshed.



## Sauna Accessory



Stone

Sauna Lamp

Bucket & Ladle

Sauna Warning Sign

Thermo-Hydro Meter

Sand Watch

## Sauna Heater



**Power source** : AC440V, 3PH

**Output** : 6.6kW / 8.0kW / 10kW

# COCINAS GALLEY EQUIPMENT



GALLEY, LAUNDRY AND PANTRY EQUIPMENT FOR SHIPS



**COCINAS BURAGLIA**  
BURAGLIA GALLEY

**COCINAS BURAGLIA** was founded in 1922 in the city of Valencia, Spain.

It started supplying furniture and equipment for domestic use.

Decades later, in the late 1950's the company changed its strategy and became specialized in the marine market which started growing rapidly together with the country's economy supplying marine accommodation equipment and furniture for galley, laundry and pantry.

**COCINAS BURAGLIA** has an ongoing commitment to quality and has held certification to ISO 9001 standards since 2006.

So far, the company has supplied equipment for thousands of maritime vessels.

## COMPANY

**COCINAS BURAGLIA** was founded in 1922 in the city of Valencia, Spain. It started supplying furniture and equipment for domestic use. Decades later, in the late 1950's the company changed its strategy and became specialized in the marine market which started growing rapidly together with the country's economy supplying marine accommodation equipment and furniture for galley, laundry and pantry.

Since 1990 the company has crossed borders and expanded its business through other European countries like France and the North Sea countries where the offshore business started to demand specialized products to meet the high standards required by their safety and quality rules.

**COCINAS BURAGLIA** has an ongoing commitment to quality and has held certification to ISO 9001 standards since 2006. So far, the company has supplied equipment for thousands of maritime vessels.



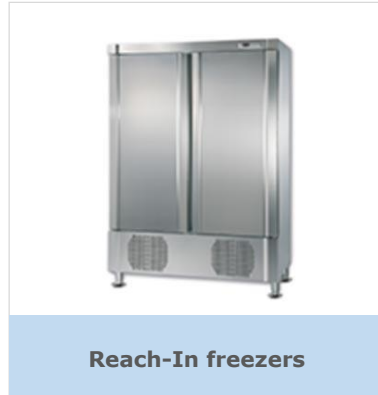
# COCINAS GALLEY EQUIPMENT

**OOOOB**  
COCINAS BURAGLIA

## CONSERVATION



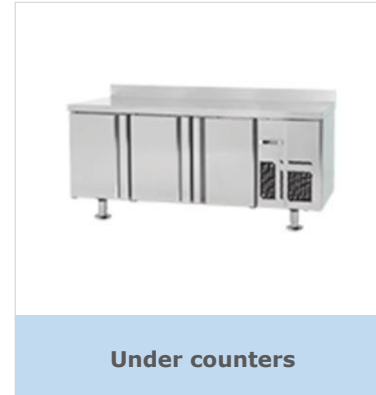
**Reach-In  
refrigerators**



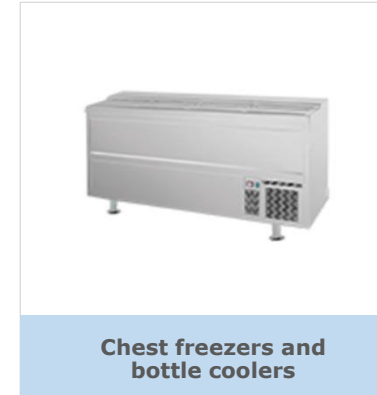
**Reach-In freezers**



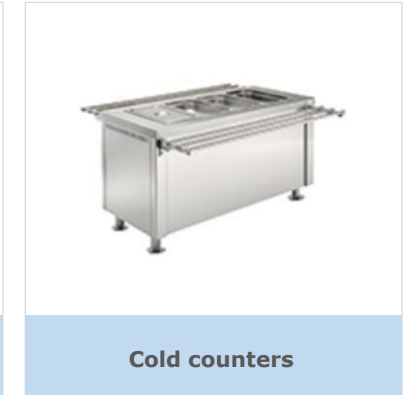
**Cooled showcases**



**Under counters**



**Chest freezers and  
bottle coolers**



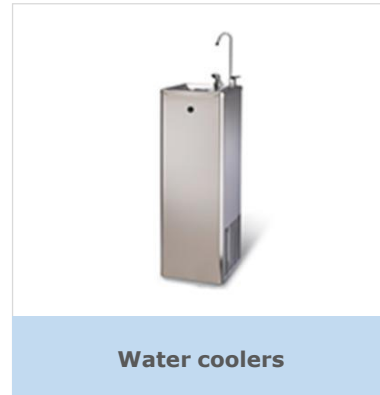
**Cold counters**



**Ice cream Makers**



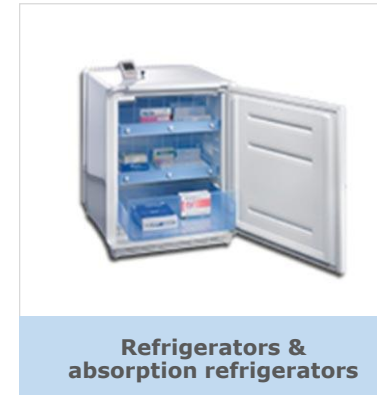
**Ice makers**



**Water coolers**



**Beverage dispensers**



**Refrigerators &  
absorption refrigerators**

# COCINAS GALLEY EQUIPMENT

**COOOB**  
COCINAS BURAGLIA



## PREPARATION



Dough mixers



Mixers



Dough sheeters



Slicers



Potato peelers



Meat mincers



Blenders



Juice extractors



Can openers



Scales

# COCINAS GALLEY EQUIPMENT

**OOOOB**  
COCINAS BURAGLIA



PROCESSING



Galley ranges



Ovens



Deep fat fryers



Bratt pans



Fry tops



Boiling pans



Rice cookers



Hot cupboards



Grills



Coffee machines



Hot drink dispensers

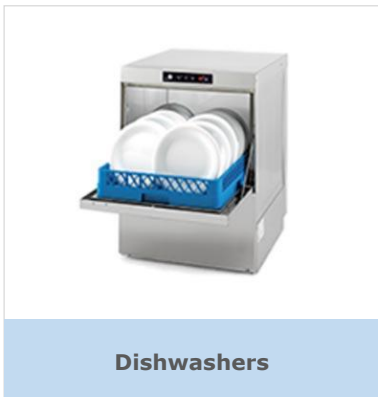


Bread toasters

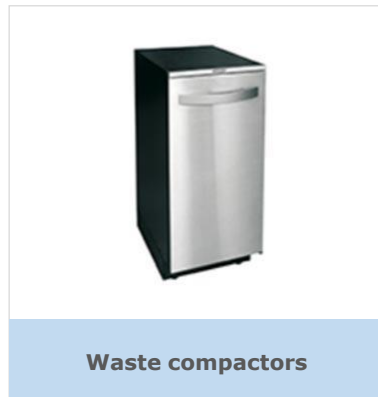
# COCINAS GALLEY EQUIPMENT

**OOOOB**  
COCINAS BURAGLIA

## CLEANING



Dishwashers

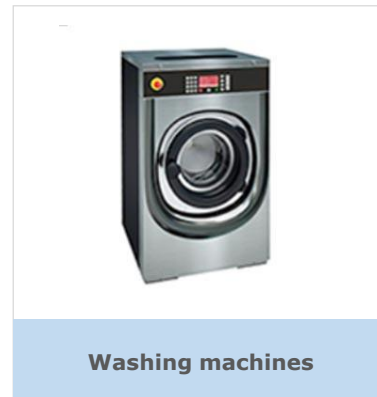


Waste compactors

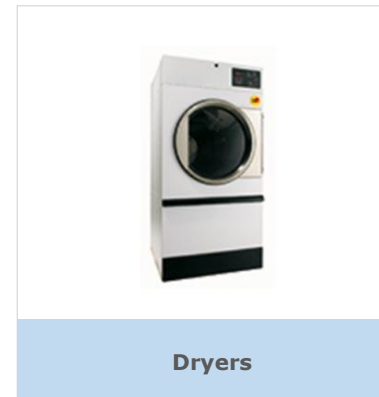


Disposers

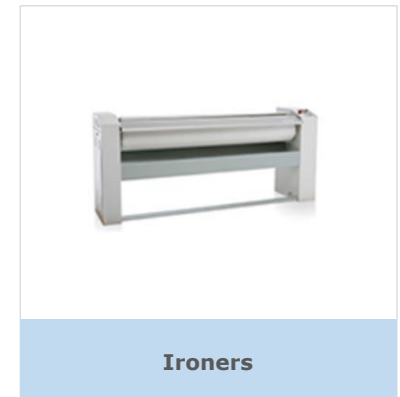
## LAUNDRY



Washing machines



Dryers



Ironers



# COCINAS GALLEY EQUIPMENT



HIGH QUALITY

**DNV**  
SURVEY REPORT  
FOR DEEP FAT Fryer

Report No:  
N14278GF

**Particulars of Product**

Product Name: Deep Fat Fryer  
Type designation: SOLAS  
Application context: Deep Fat Fryer  
Serial/Tag no: N.A.  
The product is intended for: SOLAS  
Requirements are based on: SOLAS

The product / material has been marked: N14278GF on:

**Particulars of Vendor and Purchaser**

Vendor: COCINAS BURAGLIA, S.L.  
Vendor reference: Renovación del certificado DNV project A8338768  
Purchaser: COCINAS BURAGLIA, S.L.  
Purchaser reference:

Issued at Area NB/CMC Iberia on 2021-10-04

for DNV  
This document has been digitally signed and will therefore not have handwritten signatures.  
Lacave Azpilicueta, Juan Javier  
Surveyor

DNV

LEAD DISCLAIMER: Unless otherwise stated in the applicable contract with the holder of this document or following from regulations, the liability of DNV AS, its member companies and their subsidiaries limited as their clients, suppliers and employees (DNV) relating to or in connection with the services provided for the purposes of this document or related services, whether in contract or in tort (including negligence), shall be limited to direct losses and under any circumstances shall not exceed the amount of the fee for the services provided.

DNV

Issue date: 2021-10-04

Page 1 of 2

**Bureau Veritas Certification**

**Certification**  
Awarded to  
**COCINAS BURAGLIA SL**

CL DE LA MARTINA, 2 POL.IND MORET - 46210 - PICANYA - VALENCIA - ESPAÑA

Bureau Veritas certification certifies that the Management System has been audited and found to be in accordance with the requirements of standard:

STANDARD  
**ISO 9001:2015**

Scope of certification:  
**DESIGN, PRODUCTION, ASSEMBLY, DISTRIBUTION, COMMERCIALIZATION AND AFTER SALES SERVICES OF GALLEY, LAUNDRY AND PANTRY EQUIPMENT FOR SHIPS.**

Certificate Number: ES121192-1  
Original approval date: 18-08-2006  
Certification/Renovation Audit: 21-05-2021  
Expiry date of previous cycle: 22-06-2021  
Effective date: 23-06-2021  
Certificate expiration date: 22-06-2024

This certificate is valid, subject to the general and specific terms and conditions of certification services

Bureau Veritas Iberia S.L.  
C/ Valparadisa Primera 22-24, Edificio Conba, 28188 Alcobendas - Madrid, España

ENAC CERTIFICACION

2018/03/0008

## QUALITY

Our quality is guaranteed by our Quality Policy and the following certifications:

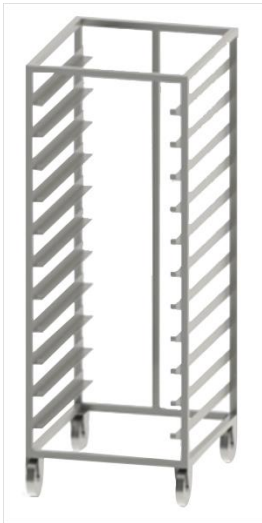
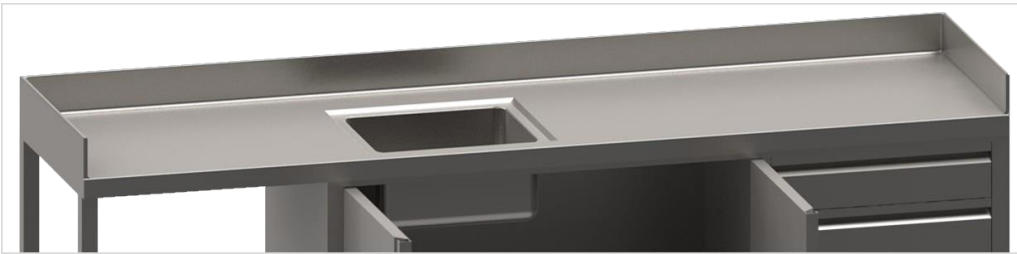
- **CE Mark**
- **ISO 9001:2015**
- **SOLAS certified by DNV**

For us, while it's very important to have certifications, surpassing the standards that our clients expect from us is paramount. These standards are high enough to deliver furniture and equipment that complies with all the regulations of markets such as USPH, NORSOK, GOST, PECAL and so on. If requested, we can certify our equipment as per any standard required.

In **COCINAS BURAGLIA** we believe that there cannot be quality without safety. All of our industrial equipment intended for maritime use is designed with the hygiene and safety as key factors.

# COCINAS GALLEY EQUIPMENT

## CATERING FURNITURE



## BURAGLIA GALLEYS MANUFACTURE TAILORED FURNITURE

We manufacture tailored stainless steel furniture. Furniture is manufactured in stainless steel AISI 304L 2B (AISI 316 on demand).

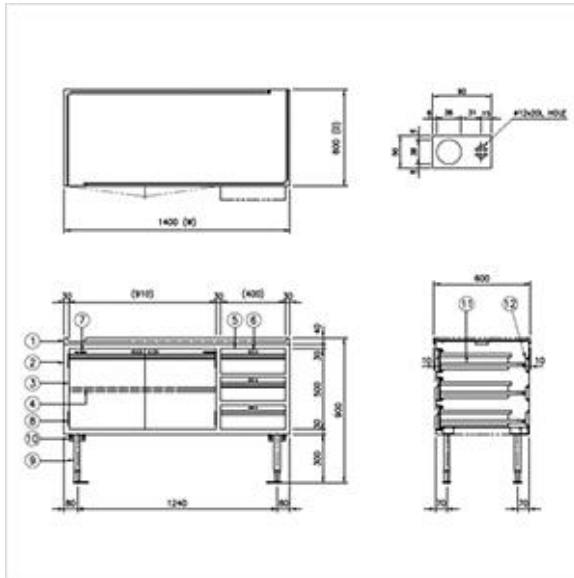
Main features:

- Reinforced counter tops either with plywood board or stainless steel omegas
- Back splash have 100 mm height
- Thickness of the stainless steel sheet is at least 1 mm
- Height adjustable feet
- All shelves are provided with sea rolling bars
- Doors and drawers can include locks

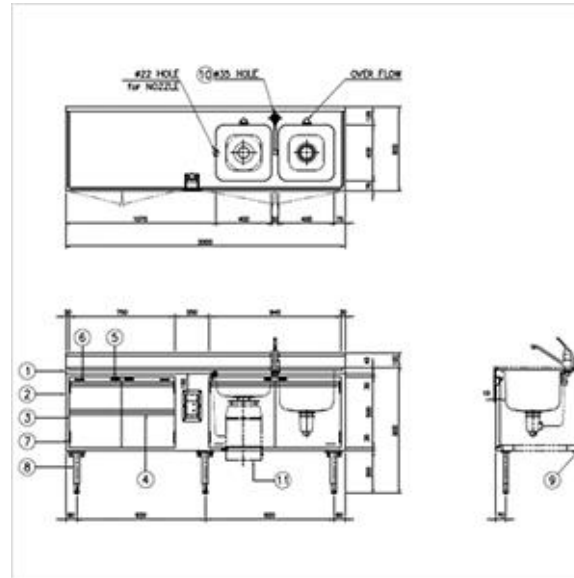
The range of furniture comprises working tables, sink tables, coffee tables, cupboards, shelves, racks, key cabinet, lockers, plinths, gutters, extraction hoods, self-service furniture, and medicine cupboard and so on. We supply whatever you might need in a galley, a laundry, a messroom, a locker room and a hospital.

# COCINAS GALLEY EQUIPMENT

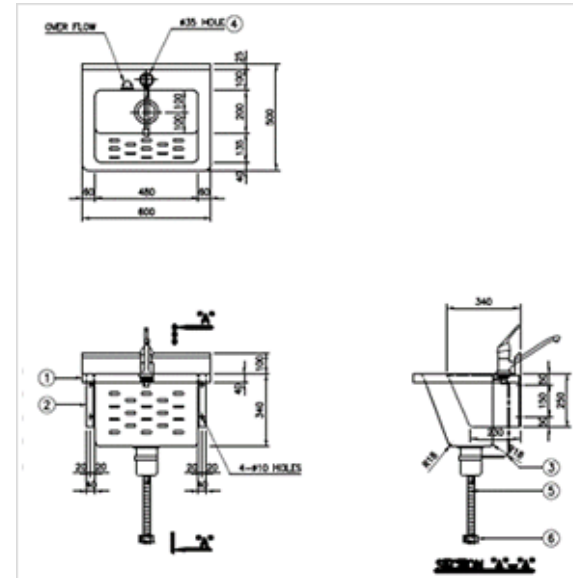
## CATERING FURNITURE



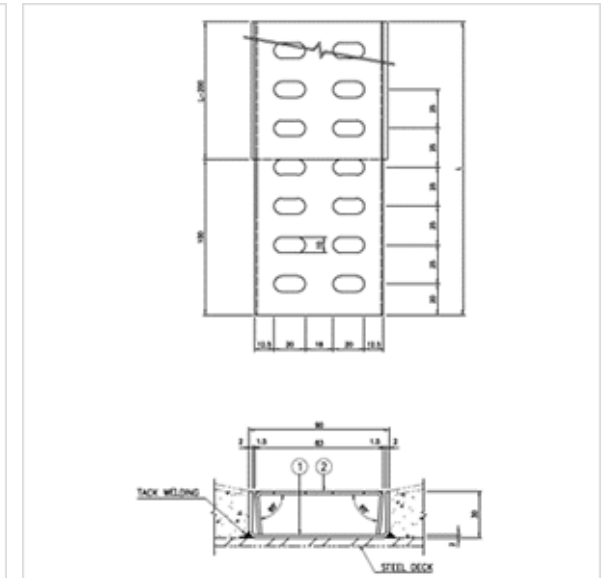
WORKING TABLE



2-BOWL SINK (DISPOSER)



WASHING TUB



GUTTER WAY

# MARAHRENS SAFETY SIGNS



## IMO safety signs

Our extensive sign portfolio complies with IMO regulations and ISO standards.

Safety on cruise ships, passenger ferries, yachts and offshore platforms is an absolute priority. In an emergency, signage, markings and instructions must be quickly and clearly recognizable for guests, passengers and crew. Marahrens stands for reliable signage on board and meets the requirements of the classification societies, SOLAS, IMO as well as other maritime standards.

All signs are produced from high-quality base materials that can withstand the harsh weather conditions at sea on the outside deck or inside. The signage is available in (photoluminescent) vinyl as well as rigid PVC. The base material complies with DIN 67510. All signage is self-adhesive for easy installation and can be purchased in different sizes.



**Means of escape signs (MES)**  
These safety signs indicate the escape route within a ship and provide directional guidance from any area within the ship to a safe place assembly station.



**Emergency equipment signs (EES)**  
They indicate the exact location of first aid facilities, first aid equipment, or portable safety equipment, the type of facility or equipment and any instructions for its use.



**Life saving systems and appliances signs (LSS)**  
Safety signs of this type indicate the exact location or storage of the life-saving equipment, the type of equipment, the quantity and any instructions for its correct use.



**Fire-fighting equipment signs (FES)**  
These safety signs indicate the exact location of the fire-fighting equipment, the type of equipment and any instructions for its effective and safe use.



**Prohibition signs (PSS)**  
This signage draws attention to restrictions and prohibitions on various actions by people. Also in accordance with the ISPS Code (International ship and port facility security code).



**Mandatory action signs (MSS)**  
Safety signs of this type used to instruct persons of a specific course of action that shall be followed. They indicate commandments on board.



**Warning signs (WSS)**  
These signs used to warn persons of possible dangerous conditions, hazards and risks that exist on board a ship. They mark obstacles and danger points.



**Fire control plan signs for trained personnel (SIS)**  
This safety signage is used to draw attention to specialised safety and fire protection equipment on board the ship. The symbols are in accordance with the Fire Control Plan.



**Hazardous substances signs**  
Signs of this type provide information about the content of containers with hazardous substances. Clear and standard-compliant labeling of hazardous substances is extremely important both on land and at sea.

# MARAHRENS EXIT LED SIGNS

## MES – Means of escape signs



Assembly Station

Emergency Exit  
(left hand)

Emergency Exit  
(right hand)

## FES – Fire-fighting equipment signs



Fire extinguisher

Fire hose reel

Fire blanket

## EES – Emergency equipment signs



Escape  
ladder

Slide to open

Emergency escape  
Breathing device

Emergency escape  
Breathing device

Automated external  
Heart defibrillator

Oxygen  
resuscitator





# MARAHRENS EXIT LED SIGNS



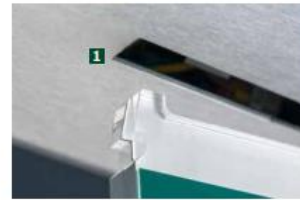
**LED exit signs**  
BY MARAHRENS



**Marahrens**  
Maritime Sign Solutions

## Recess mounting Homogeneous illumination in an elegant, flat construction

The sign can be inserted or removed from the preassembled body with an **integrated click mechanism 1**. This system makes it possible to install the base body at an early stage. The subsequent sign insertion prevents possible damage during the construction phase.



### Quick assembly on site

The base body (including the cover) is quickly and easily mounted on site in the existing ceiling cut-out with 4 fixing screws **2** (not included in the delivery).



### Materials

The slim design of the lid is available in the following material versions. Anodised aluminum with a brushed stainless steel look, aluminum powder coated according to RAL color scale as stainless steel in V4A brushed as well as V2A chromed. Further pictograms are also available.

## Surface mounting Easy installation thanks to its sleek features

The sign can be inserted or removed from the preassembled body with an **integrated click mechanism 1**. This system makes it possible to install the base body at an early stage. The subsequent sign insertion prevents possible damage during the construction phase.



### Quick assembly

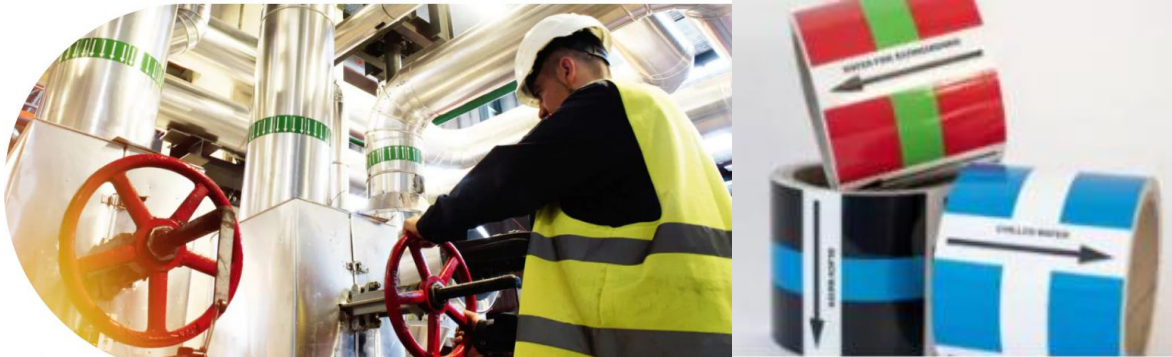
The base body (including the cover) **1** is quickly and easily mounted on the ceiling or wall with 4 fixing screws (not included in the delivery). Sign can be easily clicked into mounted base.

### Materials

The lid is available in the following material versions. Anodised aluminum with a brushed stainless steel look, aluminum powder coated according to RAL color scale as stainless steel in V4A brushed as well as V2A chromed. Further pictograms are also available.

# MARAHRENS PIPE MARKING TAPES

Mark the content and flow direction of the pipes on board according to ISO 14726 with our products  
(new ISO standard 20560)



## • Application on board

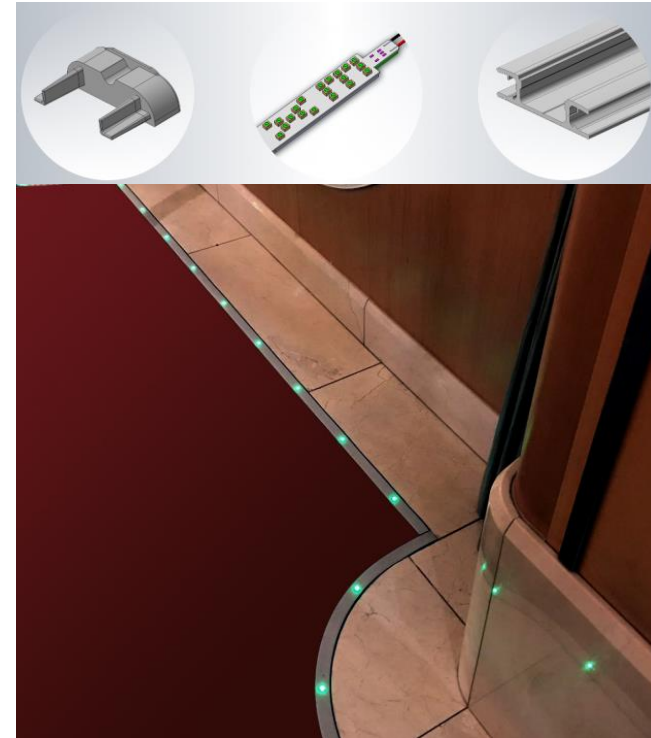
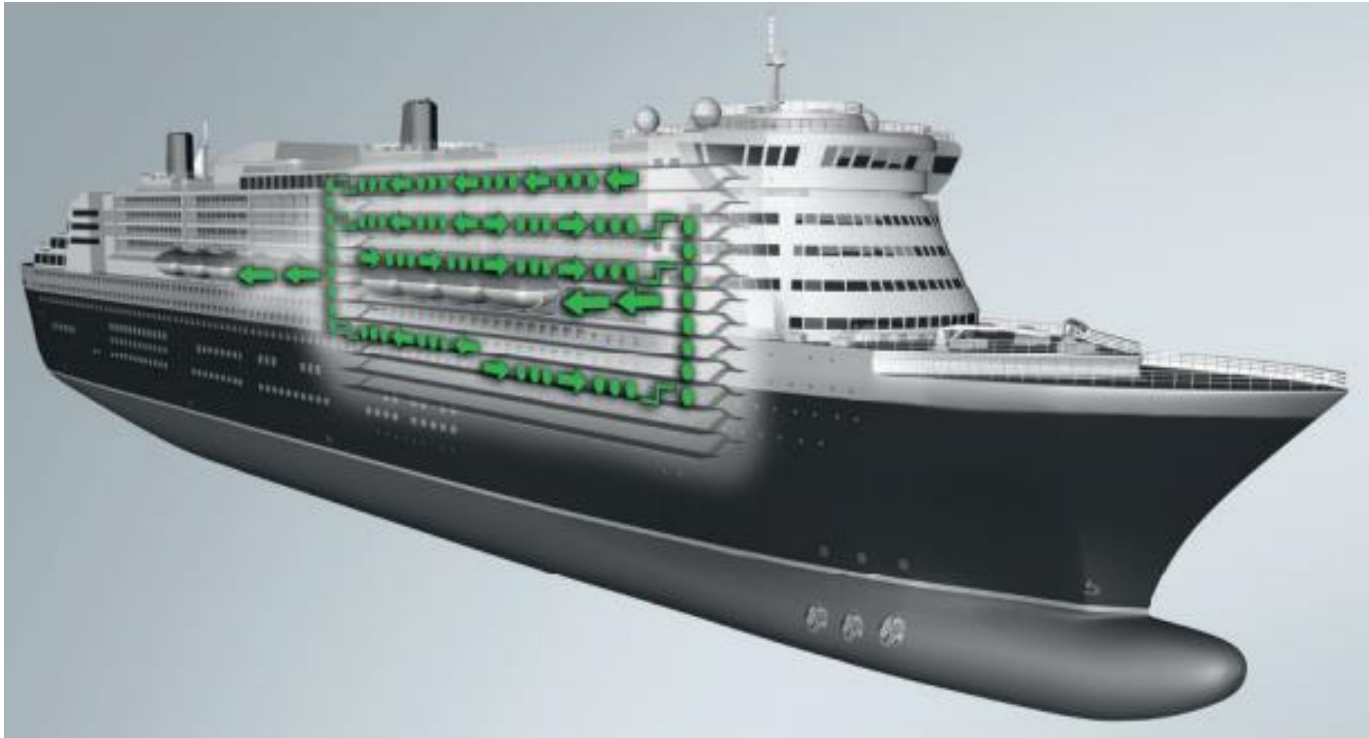
- Pipe markings are used on board as follows:
- Every pipe with a **substance** must be marked **in every room**
- A pipe marking must be installed at every point that the pipe **passes through a wall, a ceiling or a floor**
- Even **valves** or **pumps** must be marked
- In case of lengthy pipes, a marking will usually be installed in **certain distances (approx. 3-5 meters)**

Group	Pipe contents	Sign color	Font color	Add. color
1	Water	■ green	□ white	
2	Steam	■ red	□ white	
3	Air / vacuum	■ grey	■ black	
4	Flammable gases	■ yellow	■ black	■ red
5	Non-flammable gases	■ yellow	■ black	■ black
6	Acid	■ orange	■ black	
7	Alkalis	■ purple	□ white	
8	Flammable liquids & solids	■ brown	□ white	■ red
9	Non-flammable liquids & solids	■ brown	□ white	■ black
0	Oxygen	■ blue	□ white	

# HAPPICH LLL (LOW LOCATION LIGHTING) SYSTEM

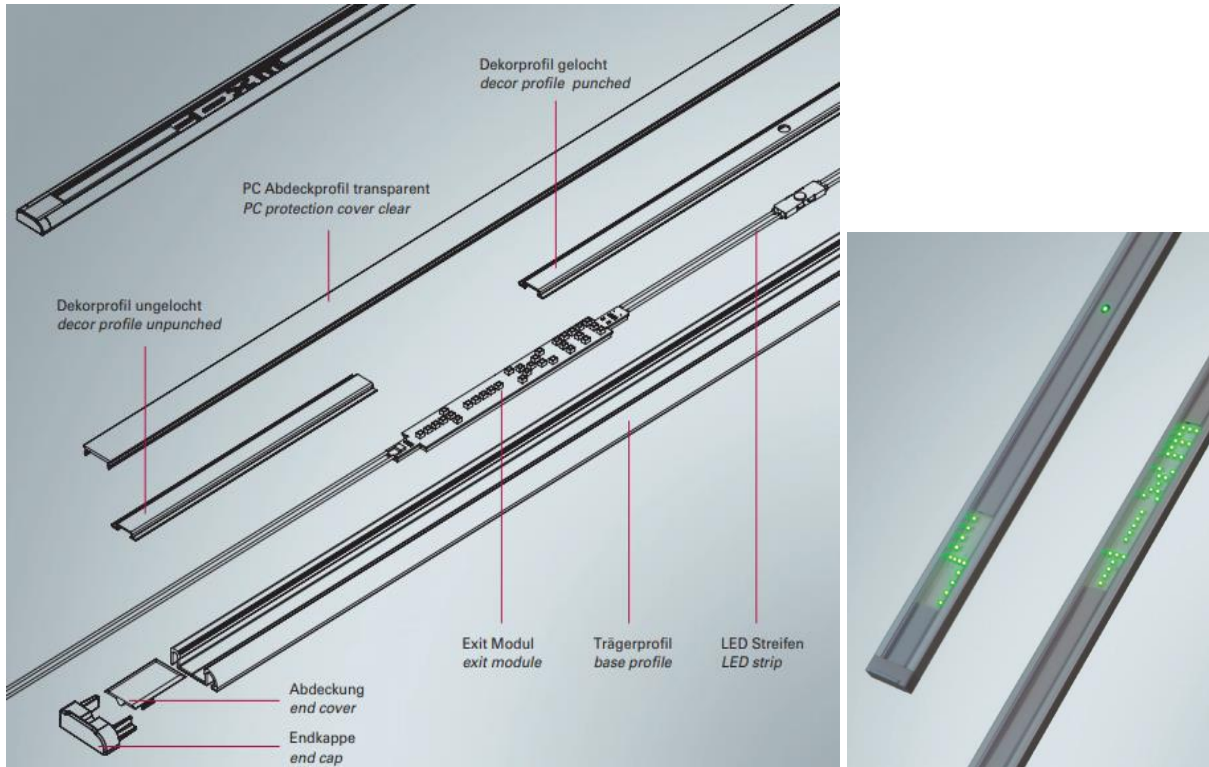
GHC HAPPICH

LOW LOCATION LIGHTING – the well know term for “ESCAPE ROUTE MARKING” components mounted near the floor to guide passengers and crew to the right and safe areas in case of emergency.





# HAPPICH LLL (LOW LOCATION LIGHTING) SYSTEM



## Application

- Shipbuilding
- Buildings
- Offshore platforms

## Norm

- ISO 15370:2010

## Function

- Marking along escape routes for emergency evacuation; can also be used as a design element (ambient lighting)

## Versions

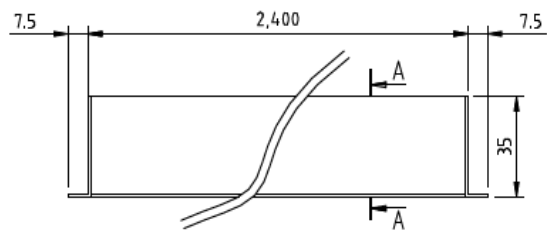
- 2 wire system: LED-strip, 2 wire, 200mm LED-distance with décor profile
- 3 wire system: LED-strip, 3 wire, 200mm LED-distance with décor profile

## Single components

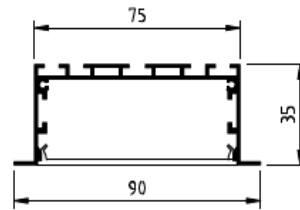
- base profile
- décor profile
- LED-strip
- protection cover
- power supply box
- LED-signs
- exit
- stair
- arrow

# KME Co., Ltd.

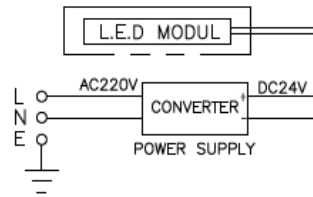
## STRIP LIGHT (EDGE LIGHT)



SIDE VIEW



SECTION "A-A" VIEW



CIRCUIT DIAGRAM

### Application

- Shipbuilding
- Buildings
- Offshore platforms

### SPECIFICATION

- COLOR TEMPERATURE : 4000K
- INPUT POWER SOURCE : AC 220V
- OUTPUT : DC 24V
- OUTPUT CURRENT : 3.8A
- CAPACITY : 30W
- COLOR : WHITE
- SIZE : 75 X 35 X 2400 mm



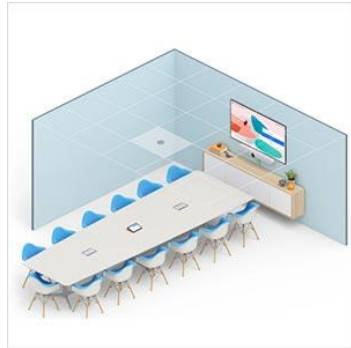
## HIGH-EFFICIENCY VIDEO CONFERENCE

# VIDEO CONFERENCE SOLUTION

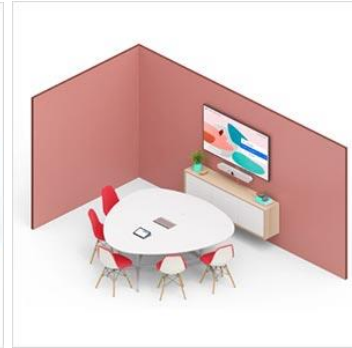
**KME's video conference solution** is enable quick adoption with meeting capabilities on board that make it easy to start, join, file's transfer, share of screen, meeting result, ideas.



**Large**



**Medium**



**Small**

- **Collaborators :**

Provide Collaborators with all-in one meeting room collaboration devices so crew are able to use seamlessly meeting.

- **Concentrators :**

Equip the occasional meeting joiner with cost-effective devices so crew are able to stay connected during the conference meeting

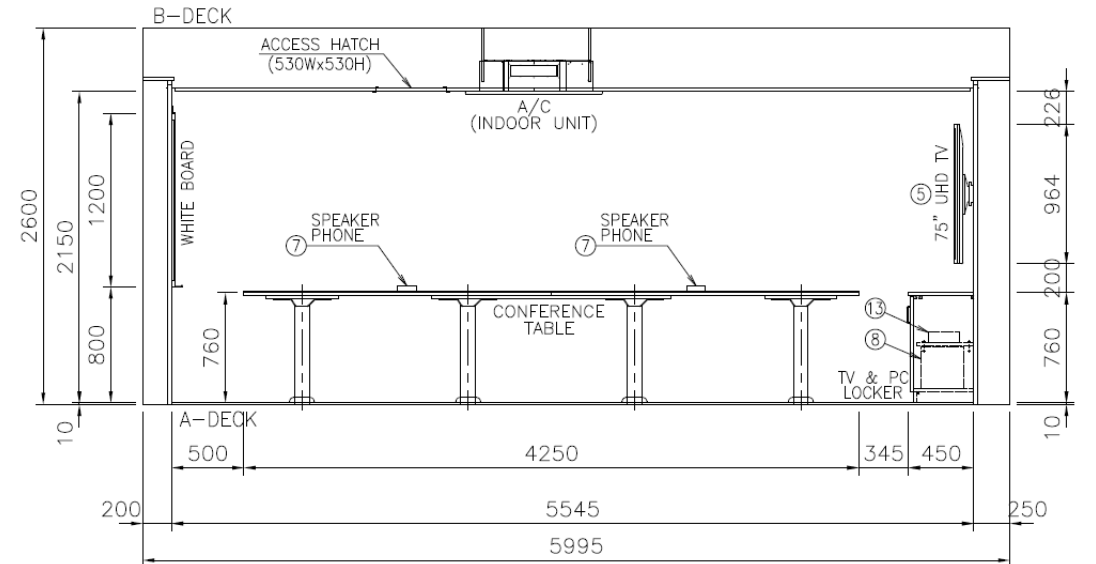
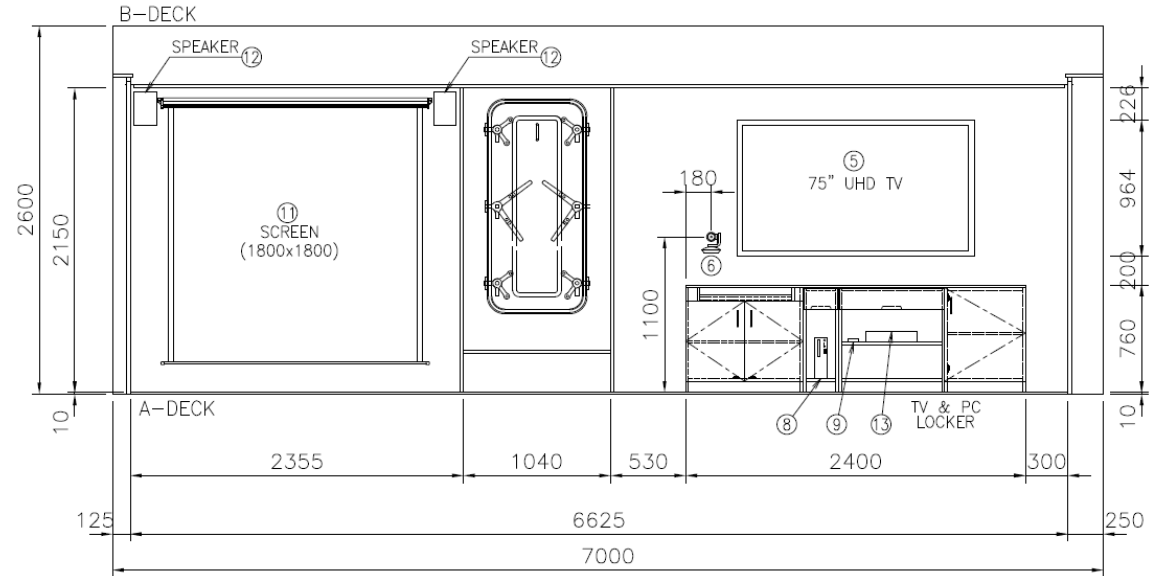


## HIGH-EFFICIENCY VIDEO CONFERENCE

# VIDEO CONFERENCE SOLUTION

### BEAM PROJECTOR & 75" UHD TV CONFERENCE ROOM

- BEAM PROJECTOR
- VIDEO CAMERA
- SCREEN (1800x1800)
- CONFERENCE MIC/SPEAKER
- 75" UHD TV
- PERSONAL PC
- AMPLIFIER



EASY-TO-ACCESS

# SCREEN GOLF

## FEATURE

- Analysis swing
- Providing rounding game for real game
- Unmanned operation
- Repetition training
- Offline mode

## SIZE

- 9000 x 4635 (mm)

## CC

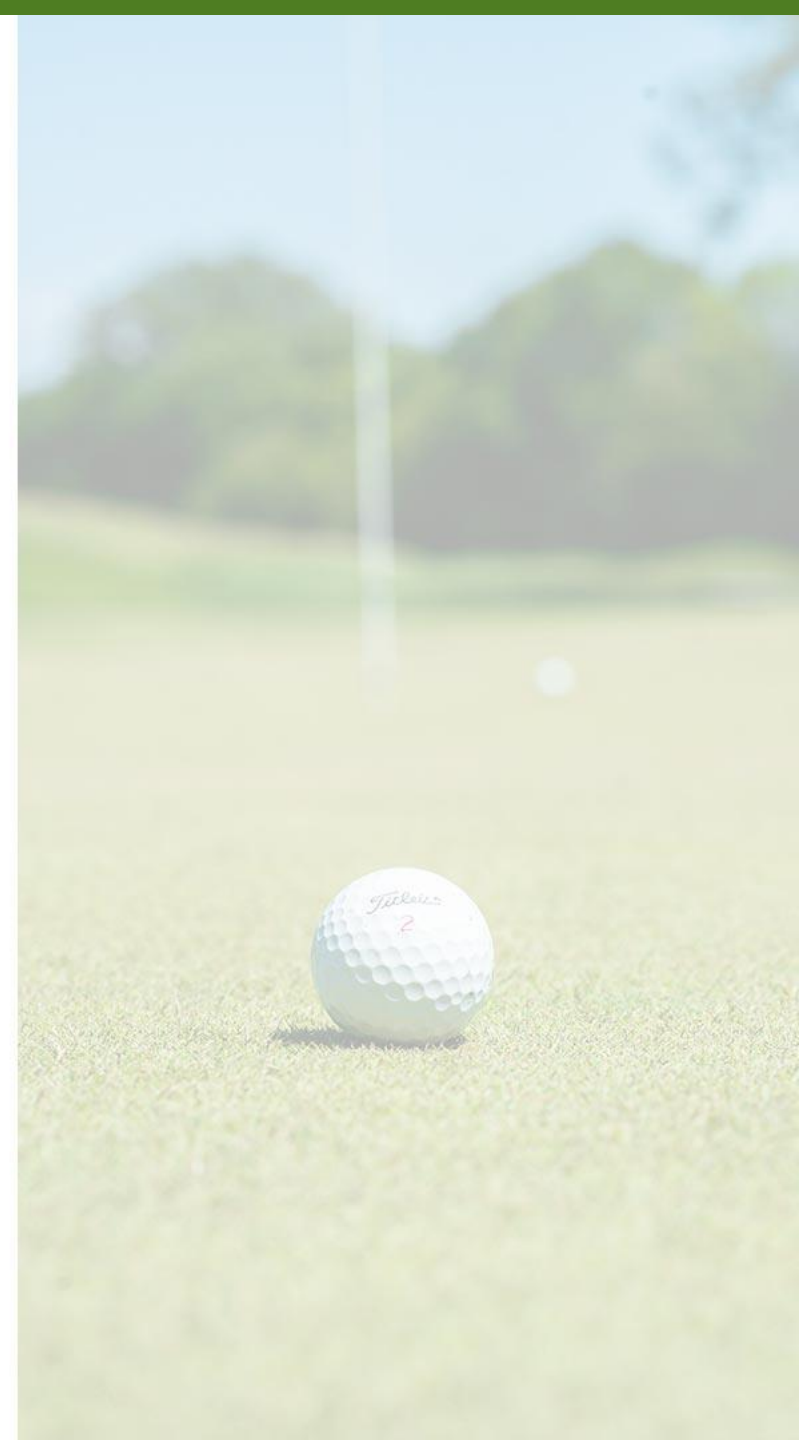
- 90 CC

## PROGRAM

- DRIVING RANGE, STROKE, LONGEST GAME, FIELD, NEARPIN, SHOT 18HOLE, PUTTING, PUTTING ROUNDING

## CONSIST

- BEAM PROJECTOR, SCREEN AUTO TEE-UP, SWING PLATE, GOLF CLUB, IRON STAND, BALL, etc



EASY-TO-ACCESS

# SCREEN GOLF



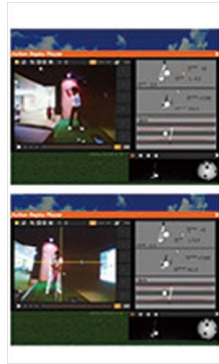
**BEAM PROJECTOR**



**KIOSK**



**WOOD CONSOLE**



**SHOT ANALYSIS**

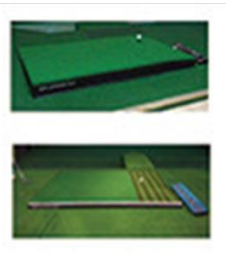
(PC & PERIPHERAL)



**SCREEN (FABRIC)**  
(RETARDANT GENERAL / LOW-NOISE)



**Auto Tee up**  
(185mm / 160mm / 127mm)



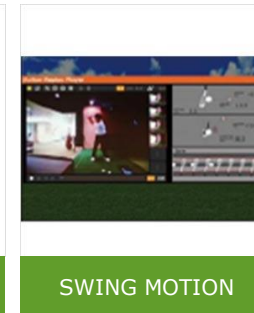
**SWING PLATE**  
(AUTO TEE-UP BUILT IN)



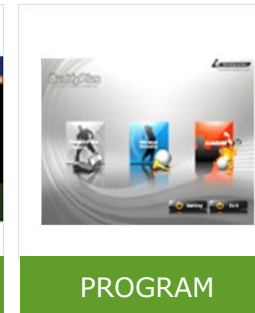
**V-VIP Round Screen**



**SENSOR**



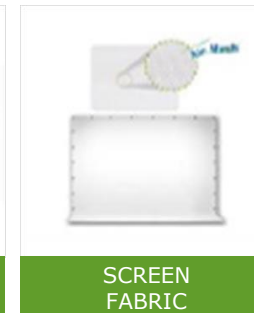
**SWING MOTION**



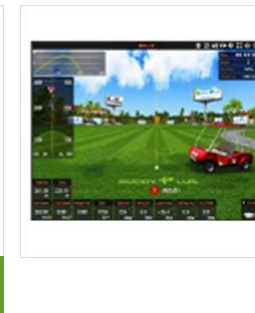
**PROGRAM**



**BEAM PROJECTOR**

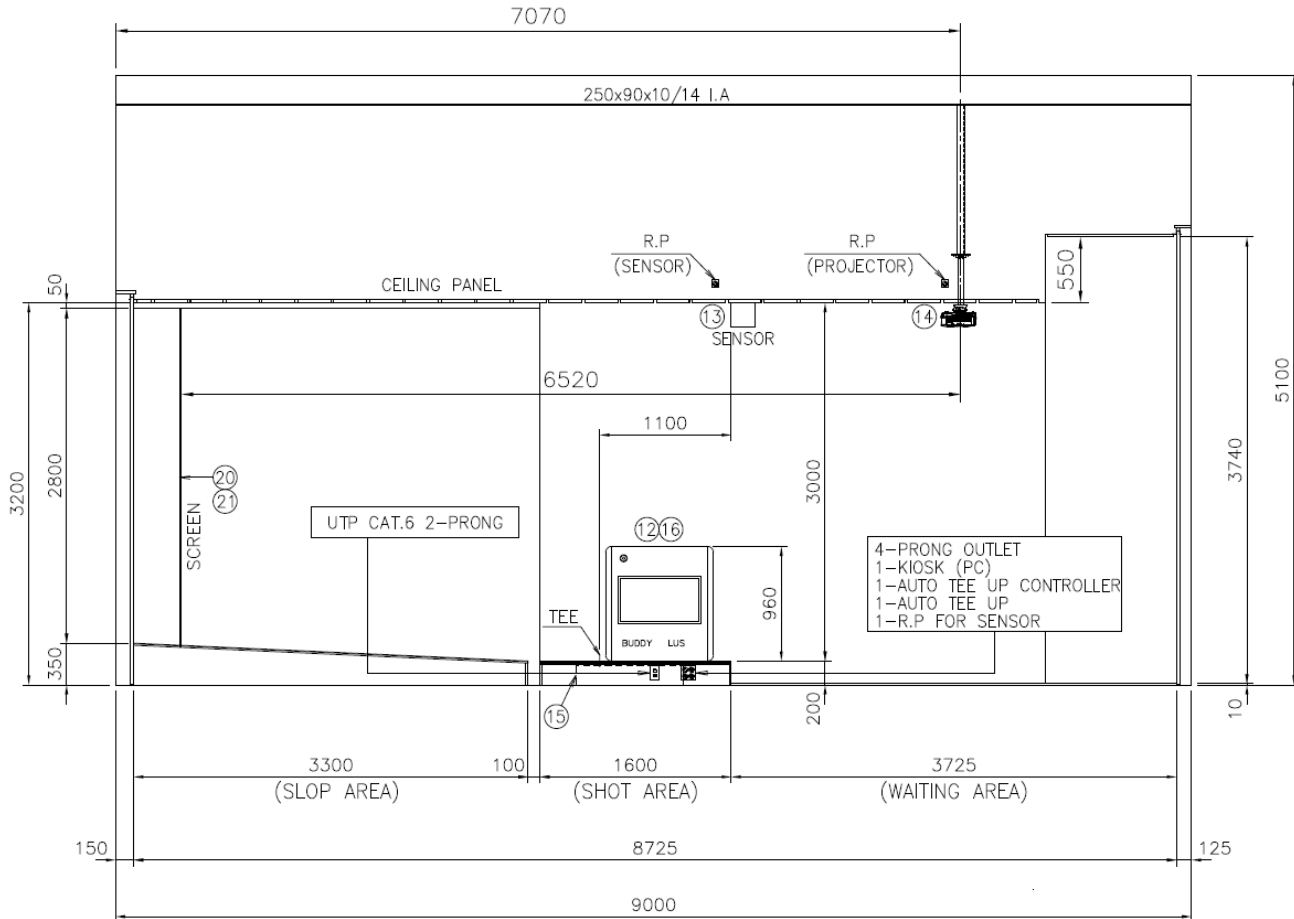


**SCREEN FABRIC**



EASY-TO-ACCESS

# SCREEN GOLF



## ROOM SIZE

- 4100 x 9000 x 5100 (CEILING 3200mm)

## SCOPE OF SUPPLY

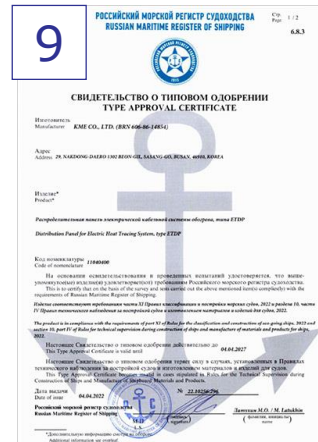
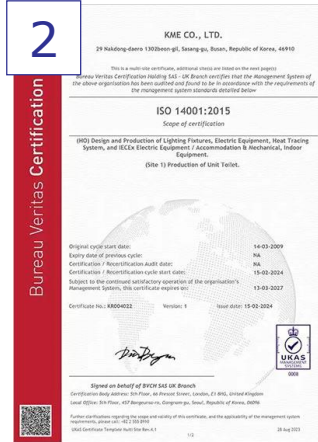
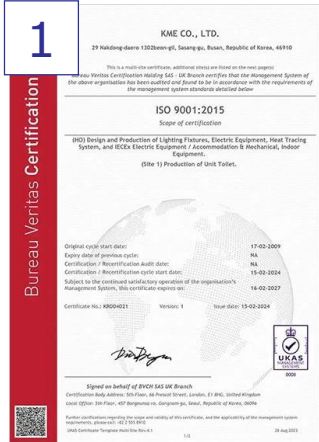
- SCREEN GOLF SYSTEM PACKAGE
- AUTO TEE UP
- SCREEN
- BOOTH(WALL/FLOOR/CEILING)
- ENGINEERING
- INSTALLATION



# GLOBAL SERVICE NETWORK



# CERTIFICATION



1. ISO9001:2015
2. ISO14001:2015
3. Laboratory
4. KR Cert. (Anti icing CP)
5. Cert. of patent (Ground material)
6. Cert. of patent (Ship Name Board)
7. Cert. of patent (LED Navi & Signal light)
8. Cert. of patent (Navi & Signal light)
9. RMRS CERT. (EX JB)
10. IECEX Cert. (EX JB)

# QM (QUALITY MANAGEMENT)

Bureau Veritas Certification



**KME CO., LTD.**

#29, NAKDONG-DAERO 1302BEON-GIL, SASANG-GU, BUSAN, KOREA, 46910

*Bureau Veritas Certification Holding SAS - UK Branch certifies that the Management System of the above organisation has been audited and found to be in accordance with the requirements of the management system standards detailed below*

---

**ISO 9001:2015**

*Scope of certification*

DESIGN AND PRODUCTION OF LIGHTING FIXTURES, ELECTRIC EQUIPMENT, HEAT TRACING SYSTEM, AND IECEX ELECTRIC EQUIPMENT / ACCOMMODATION & MECHANICAL, INDOOR EQUIPMENT

Original cycle start date:	17-02-2009
Expiry date of previous cycle:	16-02-2021
Certification / Recertification Audit date:	05-02-2021
Certification / Recertification cycle start date:	15-02-2021

Subject to the continued satisfactory operation of the organization's Management System, this certificate expires on: 16-02-2024

Certificate No.: KR003360    Version: 2    Issue date: 30-04-2022

  
 Signed on behalf of BVCH SAS UK Branch

  
 0008

Certification Body Address: 5th Floor, 66 Prescot Street, London, E1 8HG, United Kingdom  
Local Office: 5th Floor, 457 Bongseunsa-ro, Gangnam-gu, Seoul, Republic of Korea, 06096

Further clarifications regarding the scope and validity of this certificate, and the applicability of the management system requirements, please call: +82 2 555 8910



ISO 9001 : 2015

Bureau Veritas Certification



**KME CO.,LTD.**

#29, NAKDONG-DAERO 1302BEON-GIL, SASANG-GU, BUSAN, KOREA, 46910

*Bureau Veritas Certification Holding SAS - UK Branch certifies that the Management System of the above organisation has been audited and found to be in accordance with the requirements of the management system standards detailed below*

---

**ISO 14001:2015**

*Scope of certification*

DESIGN AND PRODUCTION OF LIGHTING FIXTURES, ELECTRIC EQUIPMENT, HEAT TRACING SYSTEM, AND IECEX ELECTRIC EQUIPMENT / ACCOMMODATION & MECHANICAL, INDOOR EQUIPMENT

Original cycle start date:	14-03-2009
Expiry date of previous cycle:	13-03-2021
Certification / Recertification Audit date:	06-02-2021
Certification / Recertification cycle start date:	15-02-2021

Subject to the continued satisfactory operation of the organization's Management System, this certificate expires on: 13-03-2024

Certificate No.: KR003361    Version: 2    Issue date: 30-04-2022

  
 Signed on behalf of BVCH SAS UK Branch

  
 0008

Certification Body Address: 5th Floor, 66 Prescot Street, London, E1 8HG, United Kingdom  
Local Office: 5th Floor, 457 Bongseunsa-ro, Gangnam-gu, Seoul, Republic of Korea, 06096

Further clarifications regarding the scope and validity of this certificate, and the applicability of the management system requirements, please call: +82 2 555 8910



ISO 14001 : 2015

# HSE

(HEALTH, SAFETY AND ENVIRONMENT)



Bureau Veritas Certification

**KME CO., LTD.**

#29, NAKDONG-DAERO 1302BEON-GIL, SASANG-GU, BUSAN, KOREA, 46910

*Bureau Veritas Certification Holding SAS - UK Branch certifies that the Management System of the above organisation has been audited and found to be in accordance with the requirements of the management system standards detailed below*

---

**ISO 45001:2018**

*Scope of certification*

**DESIGN AND PRODUCTION OF LIGHTING FIXTURES, ELECTRIC EQUIPMENT, HEAT TRACING SYSTEM, AND IECEX ELECTRIC EQUIPMENT / ACCOMMODATION & MECHANICAL, INDOOR EQUIPMENT**

Original cycle start date:	30-04-2022
Expiry date of previous cycle:	NA
Certification / Recertification Audit date:	23-03-2022
Certification / Recertification cycle start date:	30-04-2022
Subject to the continued satisfactory operation of the organization's Management System, this certificate expires on:	29-04-2025

Certificate No.:	KR003362
Version:	1
Issue date:	30-04-2022

Signed on Behalf of BVCH SAS UK Branch

Certification Body Address: 5th Floor, 66 Prescot Street, London, E1 8HG, United Kingdom

Local Office: 5th Floor, 457 Bongeunsa-ro, Gangnam-gu, Seoul, Republic of Korea, 06096

Further clarifications regarding the scope and validity of this certificate, and the applicability of the management system requirements, please call: +82 2 955 8910

0008

ISO 45001 : 2018

# THANK YOU

[www.h-kme.com](http://www.h-kme.com)



· **ADDRESS** : 29, Nakdong-daero 1302, beon-gil, Sasang-gu, Busan, 46910  
· **TEL** : +82-51-327-2670 · **FAX** : +82-51-327-2673 · **E-mail** : sales@h-kme.com